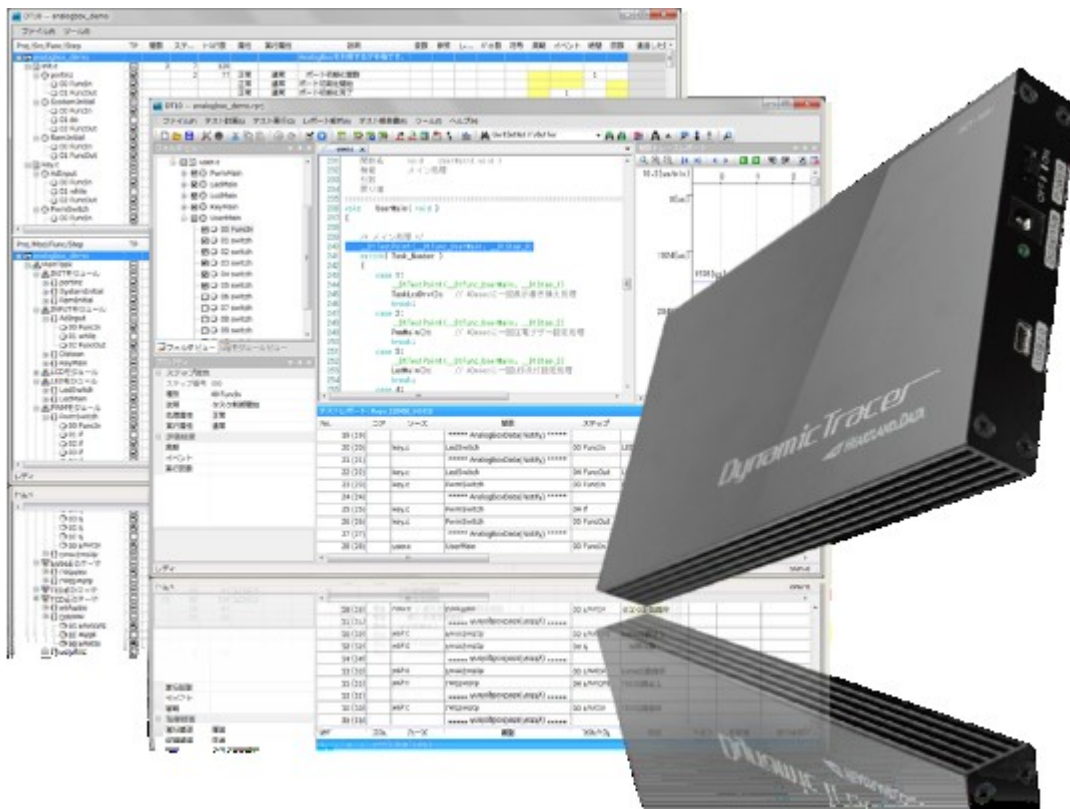


Dynamic Test DT10

Install Manual



361 Fukui-cho, Ashikaga city, Tochigi prefecture 326-0338 Japan

Tel:+81-284-22-8791 / Fax:+81-284-22-8792

URL: heartlanddata.com

About this manual

- This manual explains how to install the DT10 application and setup its license..
- This program and manual are protected by Copyright Law, and no reproduction, reprinting or modification whatsoever is permitted.
- The content and specification of this product are subject to change without prior notice.
- Please acknowledge that our company cannot assume any responsibilities for the result of use.
- Microsoft, Windows, and the Windows logo are registered trademarks in the United States and other countries of United States Microsoft Corporation.
- All other company names, logos, and product names, etc. specified are the trademarks or registered trademarks of each respective company.

Contents

1. INSTALLATION OF DT10	- 1 -
1.1. SUPPORTED PLATFORMS	- 1 -
1.1.1. <i>Operating Systems</i>	- 1 -
1.1.2. <i>Computer spec.</i>	- 1 -
1.1.3. <i>Memory spec.</i>	- 1 -
1.1.4. <i>Hard disc spec.</i>	- 1 -
1.1.5. <i>Display spec.</i>	- 1 -
1.2. INSTALLATION STEP.....	- 2 -
1.3. APPLICATION SETUP [32BIT OS]	- 3 -
1.3.1. <i>Prerequisite check and installation</i>	- 3 -
1.3.2. <i>Installation of application and each tool.</i>	- 5 -
1.4. APPLICATION SETUP [64BIT OS]	- 10 -
1.4.1. <i>Prerequisite check and installation</i>	- 10 -
1.4.2. <i>Installation of application and each tool</i>	- 12 -
1.5. SETUP OF THE USB DRIVER OF DYNAMICTRACER (FOR WINDOWS 7).....	- 17 -
1.6. SETUP OF THE USB DRIVER OF DYNAMICTRACER(FOR WINDOWS8/8.1 AND WINDOWS10).....	- 21 -
1.7. TROUBLESHOOTING FOR THE INSTALLATION	- 22 -
1.8. UNINSTALLATION OF DT10	- 28 -
1.8.1. <i>Uninstall by “Add or Remove Programs”</i>	- 28 -
1.8.2. <i>Uninstall by “setup.exe”</i>	- 28 -
1.8.3. <i>Uninstall by “DT10 Uninstaller”</i>	- 29 -
2. SETUP FOR NODELOCK LICENSE	- 30 -
2.1. SETUP FOR NODELOCK LICENSE	- 30 -
2.2. LICENSE UPDATE.....	- 31 -
2.3. TROUBLESHOOTING OF NODELOCK LICENSE	- 31 -
2.4. CONFIRMATION OF THE UNIQUE INFORMATION OF THE MACHINE	- 32 -
3. SETUP OF FLOATING LICENSE	- 33 -
3.1. ARCHITECTURE OF FLOATING LICENSE	- 33 -
3.2. SETUP OF WINDOWS SERVER.....	- 34 -
3.2.1. <i>System Requirements</i>	- 34 -
3.2.2. <i>Confirmations before the installation</i>	- 35 -
3.2.3. <i>Installation of license manager</i>	- 36 -
3.2.4. <i>Setup of a client PC</i>	- 41 -
3.2.5. <i>Licensing confirmation</i>	- 42 -

3.2.6.	<i>Uninstall DT10LicenseManager</i>	- 44 -
3.3.	LICENSE UPDATE FOR WINDOWS SERVER	- 45 -
3.3.1.	<i>Update at the license server machine</i>	- 45 -
3.3.2.	<i>Update at the client machine</i>	- 45 -
3.3.3.	<i>Licensing confirmation</i>	- 45 -
3.4.	SETUP OF A LINUX SERVER	- 46 -
3.4.1.	<i>System Requirements</i>	- 46 -
3.4.2.	<i>Confirmations before the installation</i>	- 46 -
3.4.3.	<i>Installation flow</i>	- 47 -
3.4.4.	<i>Setup of a client PC</i>	- 48 -
3.4.5.	<i>Licensing confirmation</i>	- 49 -
3.4.6.	<i>Uninstall DT10LicenseManager</i>	- 50 -
3.5.	LICENSE UPDATE FOR LINUX SERVER	- 51 -
3.5.1.	<i>Update at the license server machine</i>	- 51 -
3.5.2.	<i>Update at the client machine</i>	- 51 -
3.5.3.	<i>Licensing confirmation</i>	- 51 -
4.	SETUP OF THE USB DONGLE LICENSE	- 57 -
4.1.	SETUP OF THE USB DONGLE LICENSE	- 57 -
4.1.1.	<i>Installation of runtime</i>	- 57 -
4.1.2.	<i>Connect the USB dongle to the machine</i>	- 57 -
4.1.3.	<i>Licensing confirmation</i>	- 58 -
4.2.	UPDATE THE USB DONGLE LICENSE	- 59 -
4.2.1.	<i>Update the V2C file</i>	- 59 -
4.2.2.	<i>Licensing confirmation</i>	- 60 -
4.2.3.	<i>Generate C2V file</i>	- 60 -
4.3.	TROUBLESHOOTING OF THE USB DONGLE LICENSE	- 61 -
5.	CHANGE HISTORY	- 62 -

1. Installation of DT10

This chapter helps you prepare for the DT10 installation and explains how to install it.

1.1. Supported platforms

DT10 and its tool support the following platforms:

1.1.1. Operating Systems

- Windows 7
 - Windows 8 / 8.1
 - Windows 10
- * DT10 supports both the 32 bit and 64 bit Versions.
- * You need to install Windows Installer 3.1 and Microsoft.NET Framework 2.0 before installing DT10. (Without those, DT10 cannot be set up. Please install them from Windows Update.)

1.1.2. Computer spec.

- PC / AT compatible machine only.
- Must be equipped with a 2GHz Pentium 4 processor equivalent or higher.
- System with 2CPUs or more recommended.
- With USB2.0 port (supporting high-speed transfer). (USB1.0 is not supported.)

1.1.3. Memory spec.

- Installed memory of more than 1GB is required.
- Installed memory of more than 2GB is recommended.

1.1.4. Hard disc spec.

- 100MB or more of free space is required to install DT10.
- 2GB or more of free space is required to analyze the Test Report.
1GB or more of free space is needed to collect the Test Report.

1.1.5. Display spec.

- XGA resolution (1024 × 768 pixels) or more is needed.
- WXGA resolution (1024 × 768 pixels) or more is recommended.
- Please use by the default or the standard size for the font size.



Caution

Administrator privilege is needed to install the DT10.

Install with a user account which has the administrator privilege.

The installed application can then be used with a normal user account.

1.2. Installation Step

The following step shows you how to install DT10 on a Windows PC.

About the installer, please download from our support site, or please use one in the CD-ROM we provide.

1. Check that the USB Dongle and DynamicTracer are not connected to the PC being used.
2. Execute "setup.exe" via the downloaded setup file.
3. It is advisable to ensure a stable environment, whereby no software is being executed and background software applications are closed when installing DT10. Install DT10 with the following displayed instruction:
4. After the installation, please start DT10 application.

* At this step, the application starts as "Free Edition" if no license has been setup or a license is invalid.

In case the license is valid, the application starts as "Standard Edition".

Setup flow is referred in the other section.

5. Switch on the DynamicTracer and connect it to the PC being used.
6. Install the USB driver for DynamicTracer.

* Installation flow the USB driver is referred in the other section.

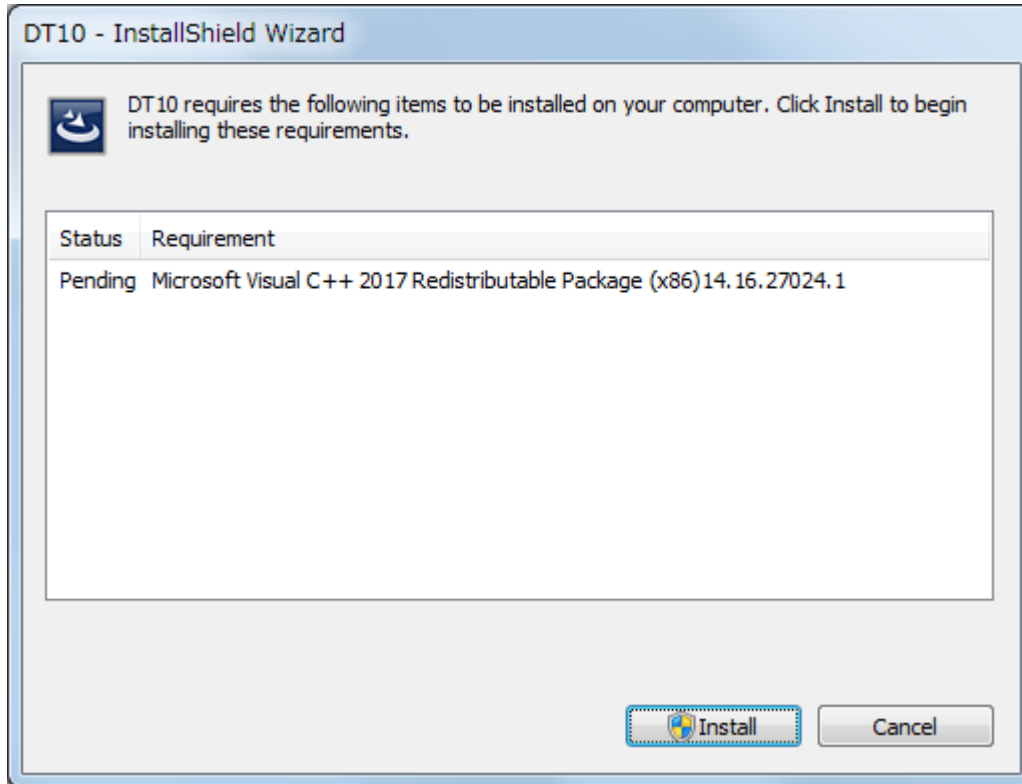
1.3. Application setup [32bit OS]

Execute “setup.exe”, whereupon the installation of the DT10 application and required files starts.

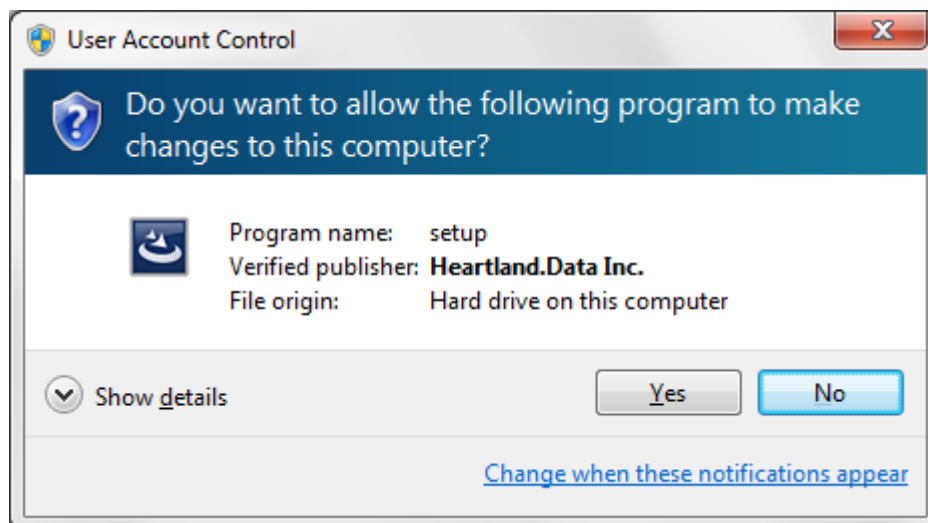
Execute the following steps and the setup is completed.

1.3.1. Prerequisite check and installation

When executing “setup.exe”, the following window is displayed if “Microsoft Visual C++ 2017 Redistributable Package(x86)” is not installed on your PC. If you have already installed it on your PC, the next step is displayed.

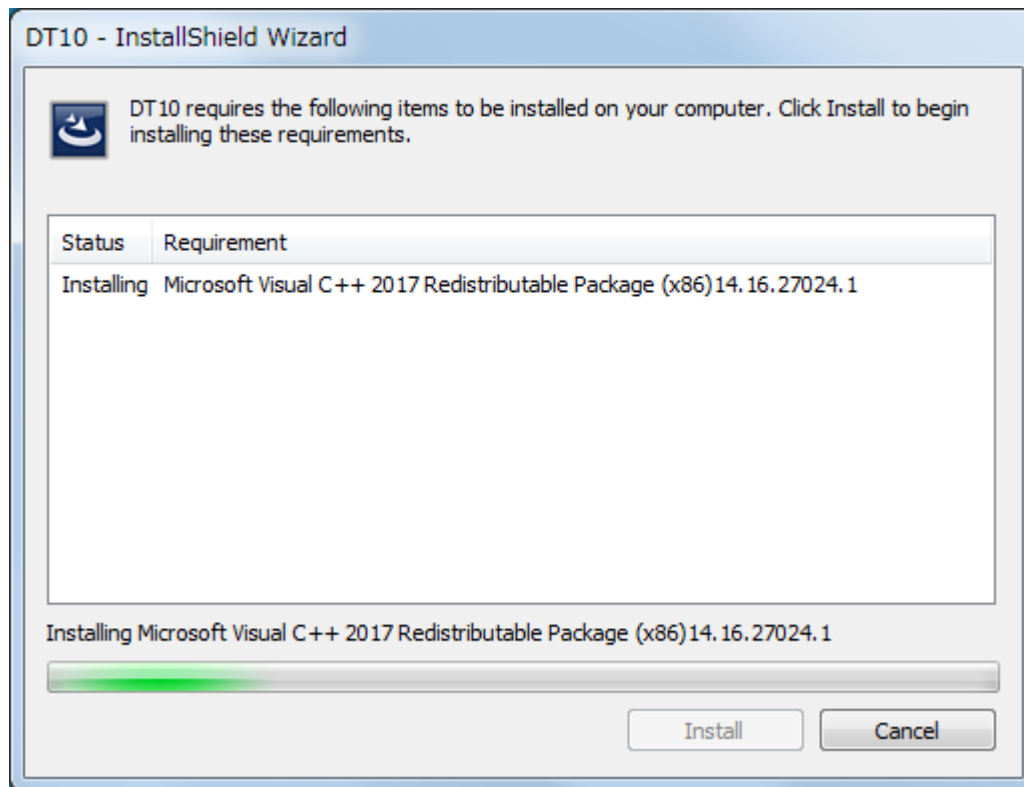


If you click the 'Install' button, 'User Account Control' will be displayed.



Please confirm the 'Verified Publisher' and click 'Yes', then the installation will get started.

"Microsoft Visual C++ 2017 Redistributable Package(x86)" is installed.



The installation will take a few minutes and it will be up to the machine situation.

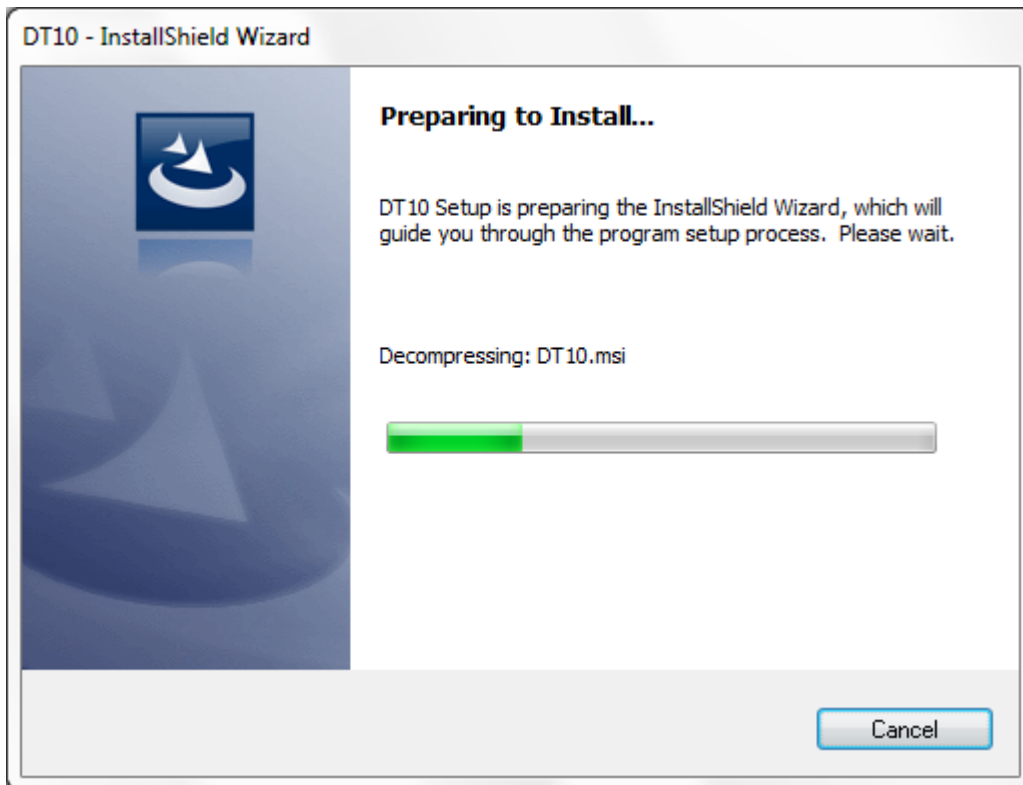
If it is finished, then the installation of DT10 Application will begin.

You may be recommended to reboot the PC, but please continue installing without rebooting it.

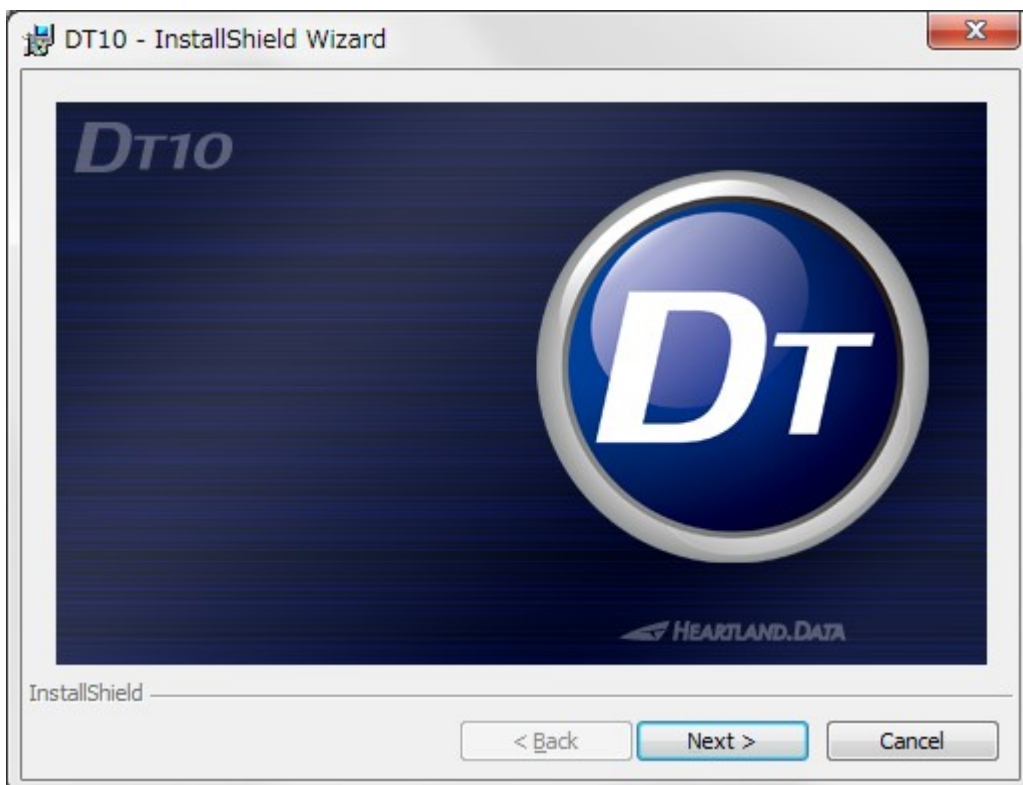
When the installation and setup of the DT10 are complete, reboot it manually.

1.3.2. Installation of application and each tool.

Start the DT10 setup, and the setup file is expanded.

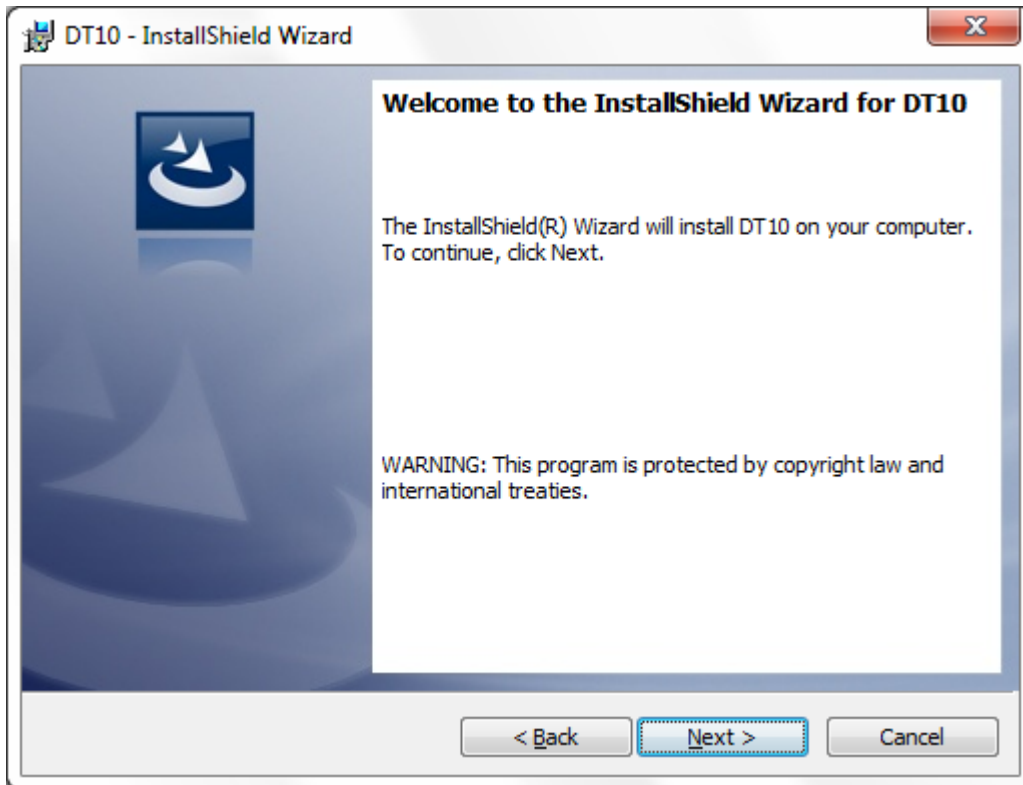


When the expansion is complete, the installation is ready and the splash view is displayed.



Click the "Next" button.

The welcome view is displayed.



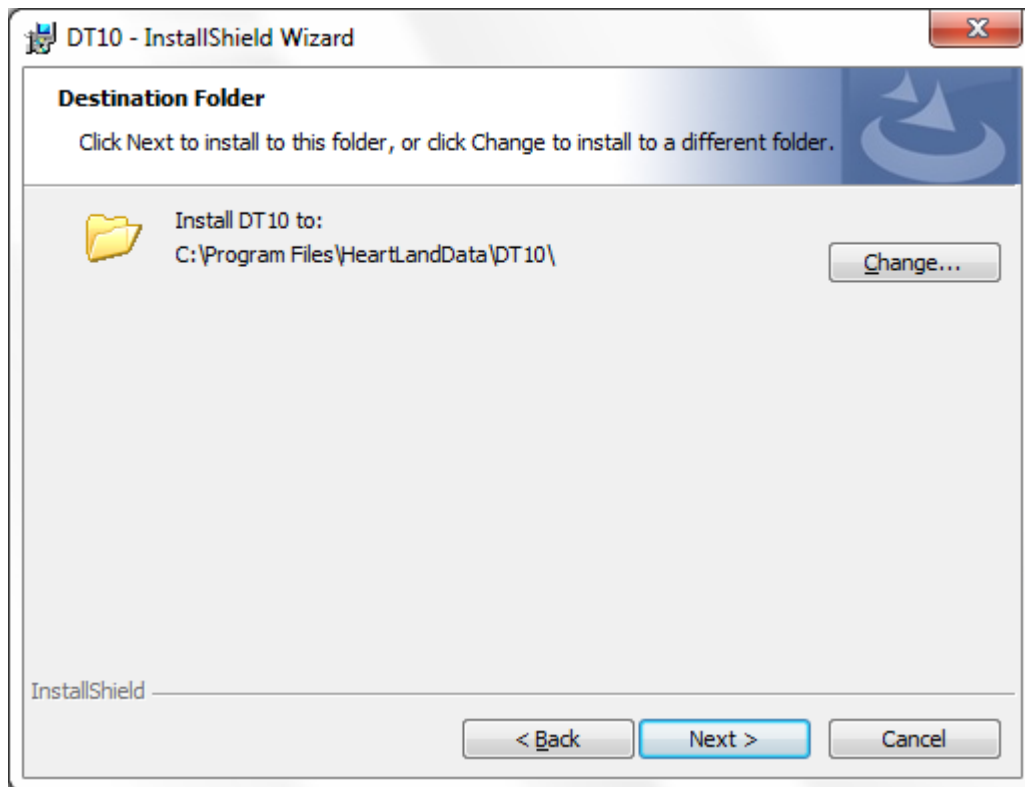
Click the "Next" button.

"DT10 License Agreement" is displayed.



Please confirm the content and select "I accept the terms in the license agreement". Then Click "Next".

The “Destination Folder” view is displayed.



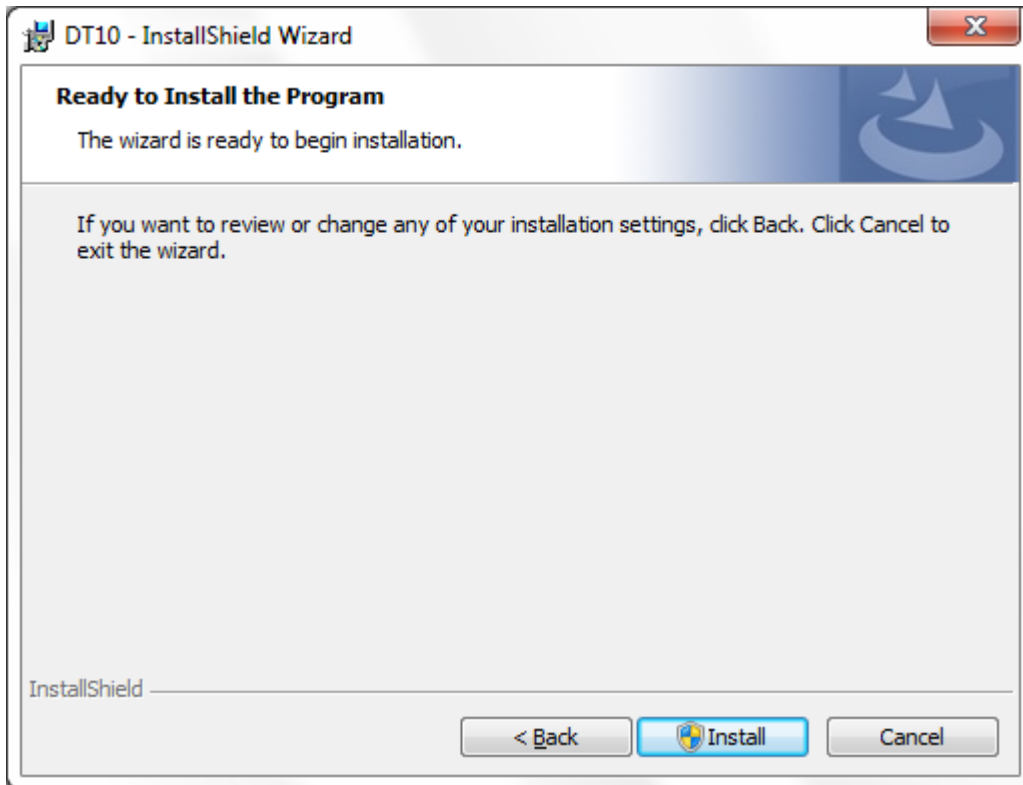
The default destination folder specified is “[Program Files Path]HeartLandData\DT10”.

The [Program Files Path] depends on the PC (driver name of the booted OS and so on).

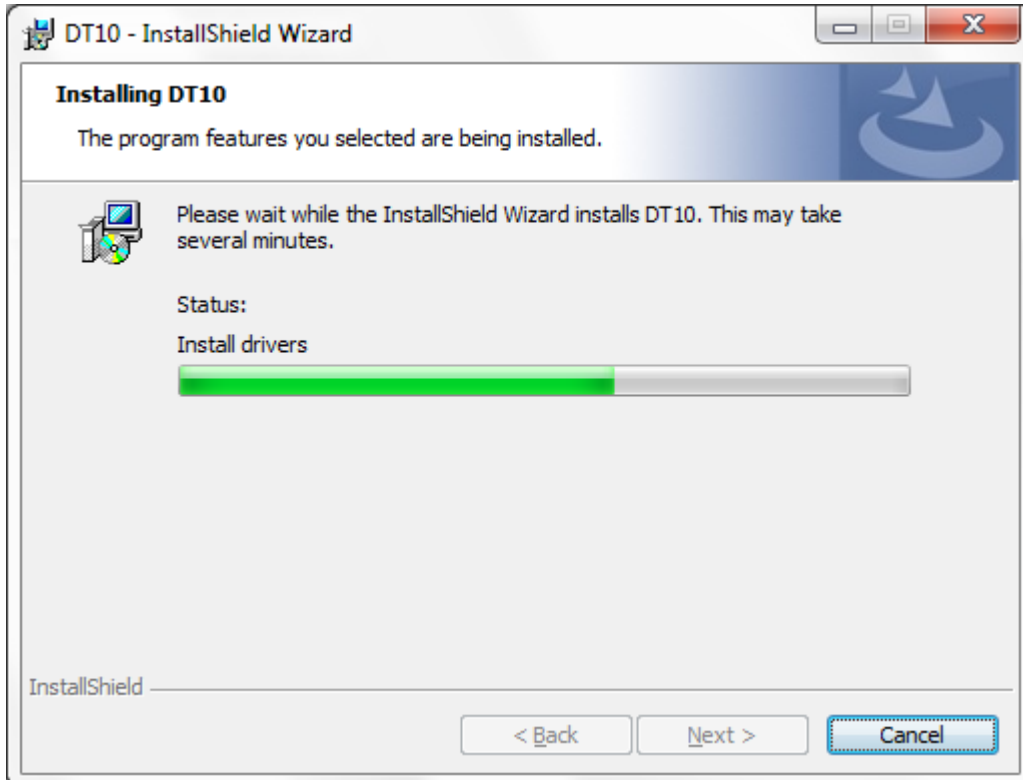
If you wish to change the specified folder, click the “Change” button and specify the folder.

After you have confirmed the installation folder, click the “Next” button.

The “Ready to Install the Program” view is displayed.

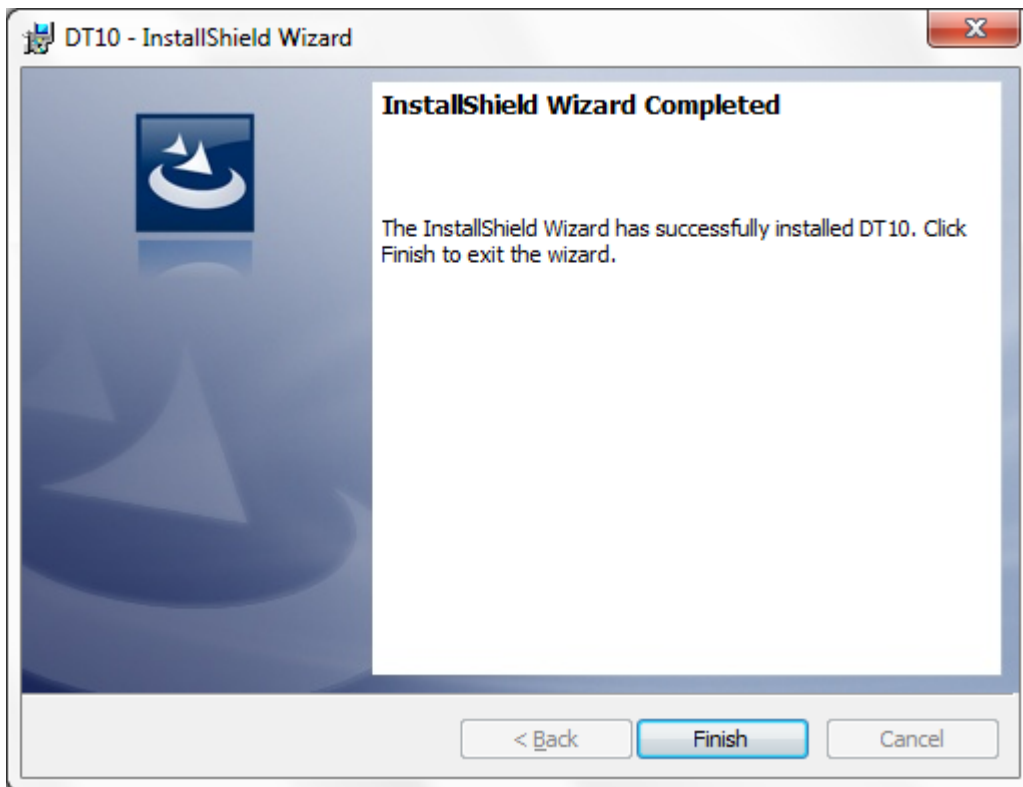


If you wish to install it with the current setup, click the “Install” button.



The installation time depends on your PC environment. It may range from a few seconds to a few minutes.

When the DT10 installation is successfully completed, the following view is displayed:



Click the "Finish" button and the setup is complete.

1.4. Application setup [64bit OS]

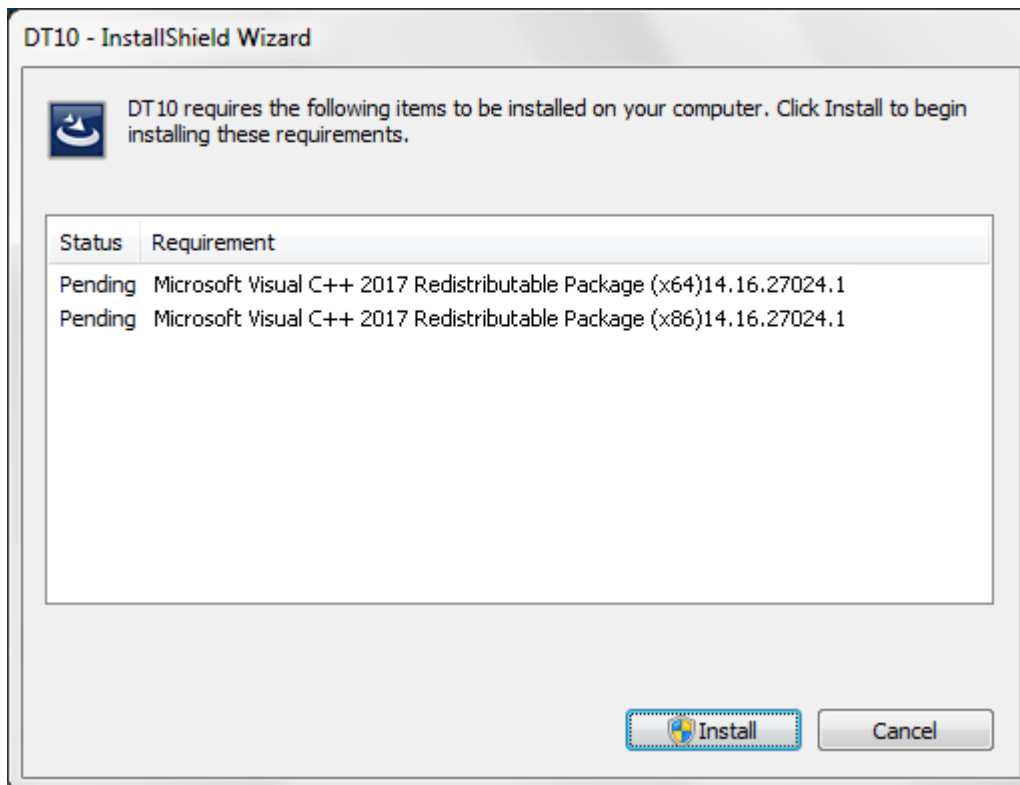
Execute "setup.exe", whereupon the installation of the DT10 application and required files starts.

Execute the following steps and the setup is completed.

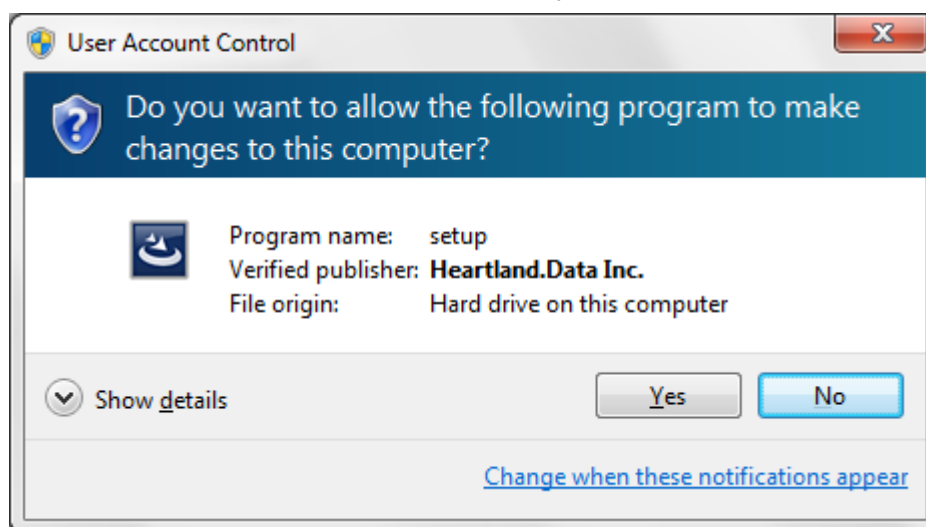
1.4.1. Prerequisite check and installation

When executing "setup.exe", the following window is displayed:

Install "Microsoft Visual C++ 2017 Redistributable Package(x64)" and "Microsoft Visual C++ 2017 Redistributable Package(x86)."

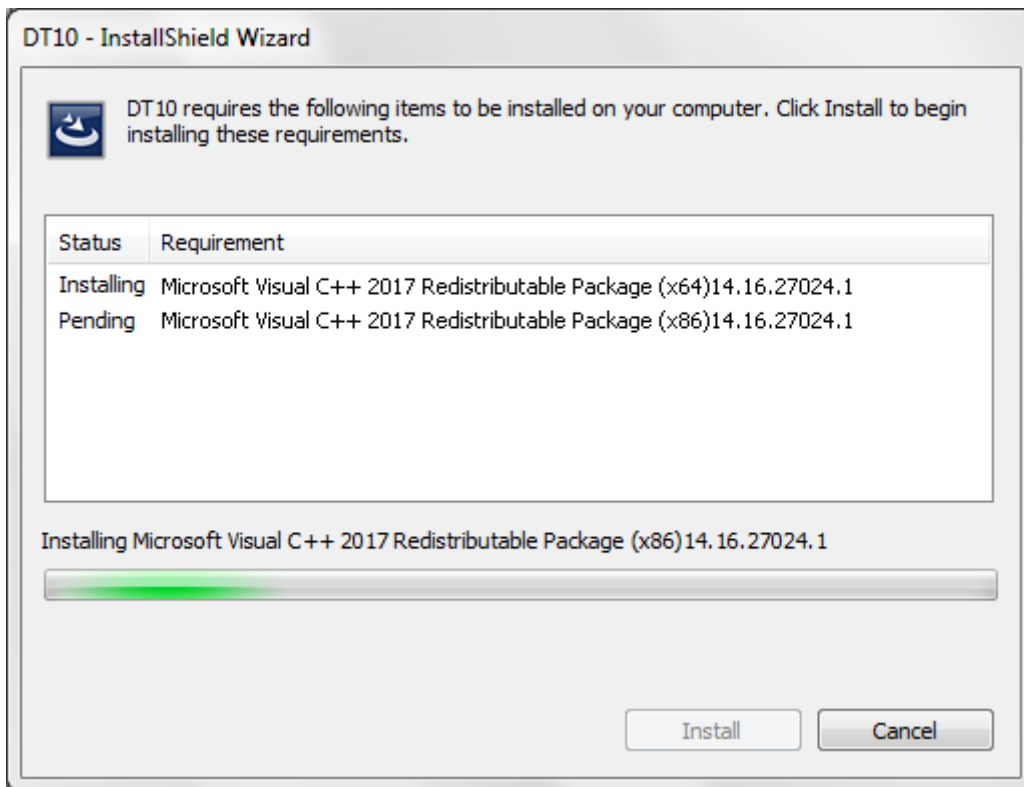


If you click the 'Install' button, 'User Account Control' will be displayed.



Please confirm the 'Verified Publisher' and click the 'Yes', then the installation will get started.

“Microsoft Visual C++ 2017 Redistributable” is installed.



The installation will take a few minutes and it will be up to the machine situation.

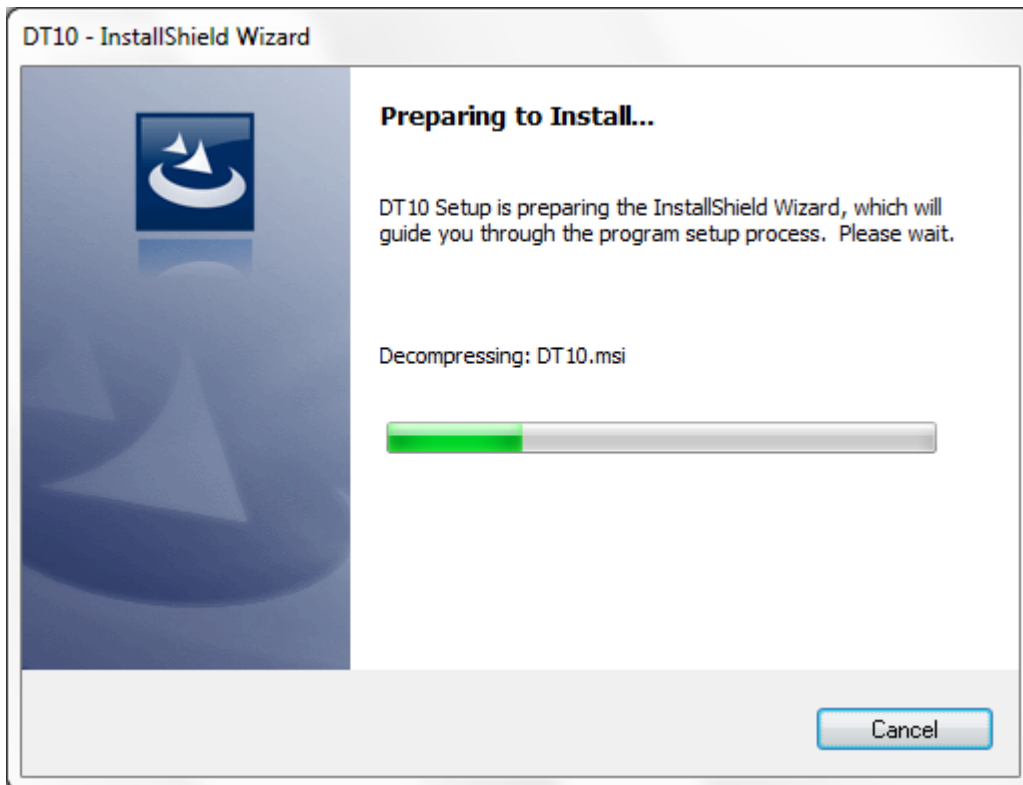
If it is finished, then the installation of DT10 Application will begin.

You may be recommended to reboot the PC, but please continue installing without rebooting it.

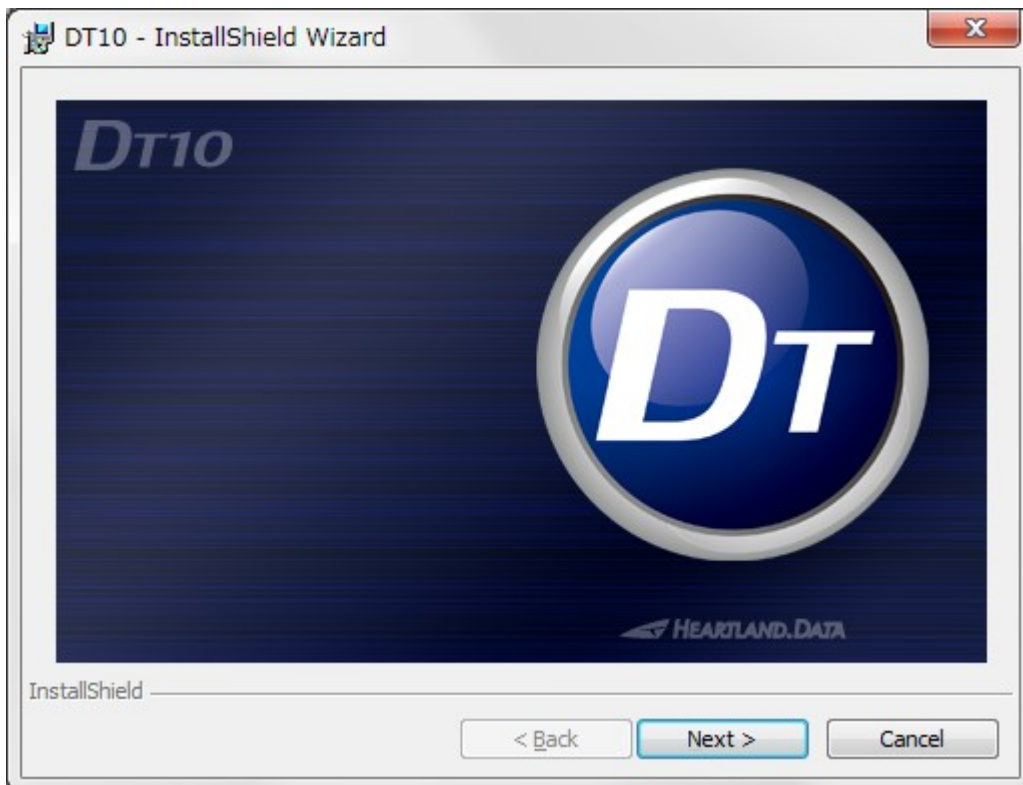
When the installation and setup of the DT10 are complete, reboot it manually.

1.4.2. Installation of application and each tool

Start the DT10 setup, and the setup file is expanded.

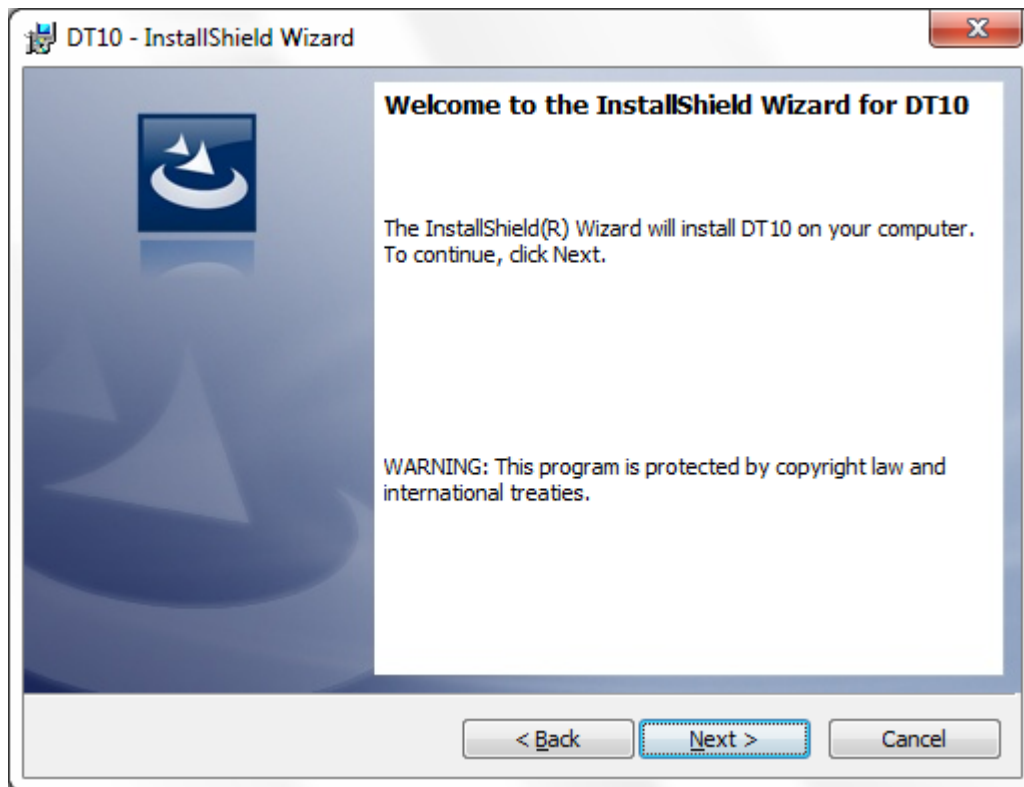


Then the expansion is complete, installation is ready and the splash view is displayed.



Click the "Next" button.

The welcome view is displayed.



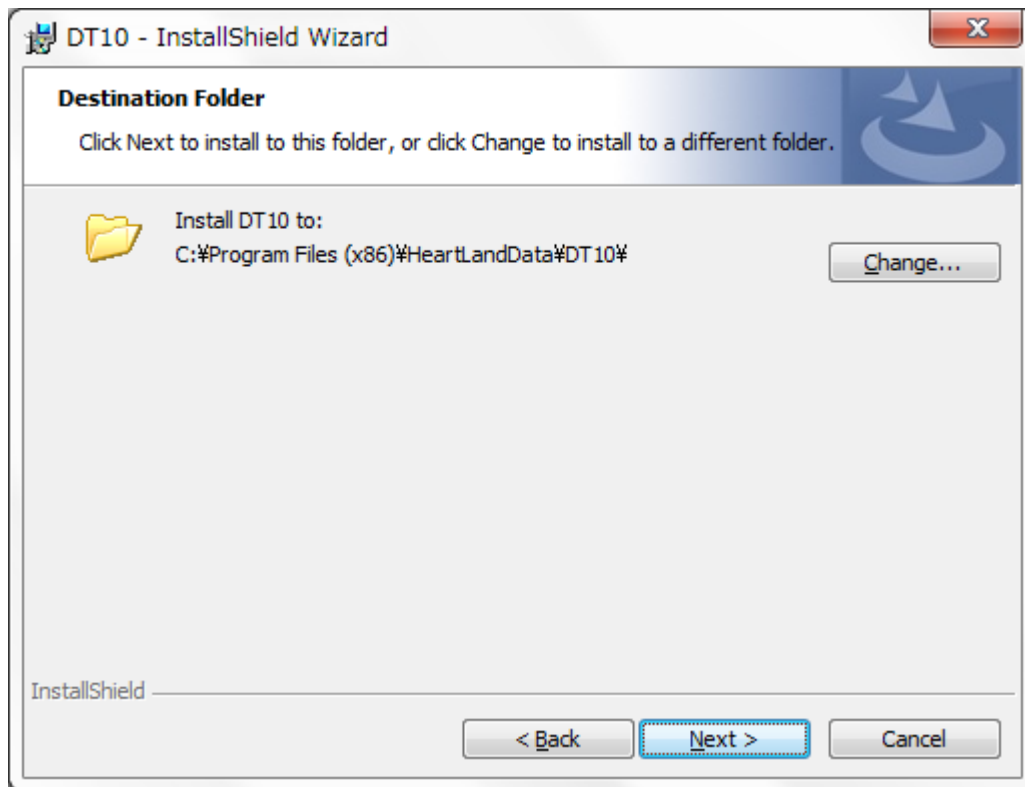
Click the "Next" button.

"DT10 License Agreement" is displayed.



Please confirm the content and select "I accept the terms in the license agreement". Then Click "Next".

The “Destination Folder” view is displayed.

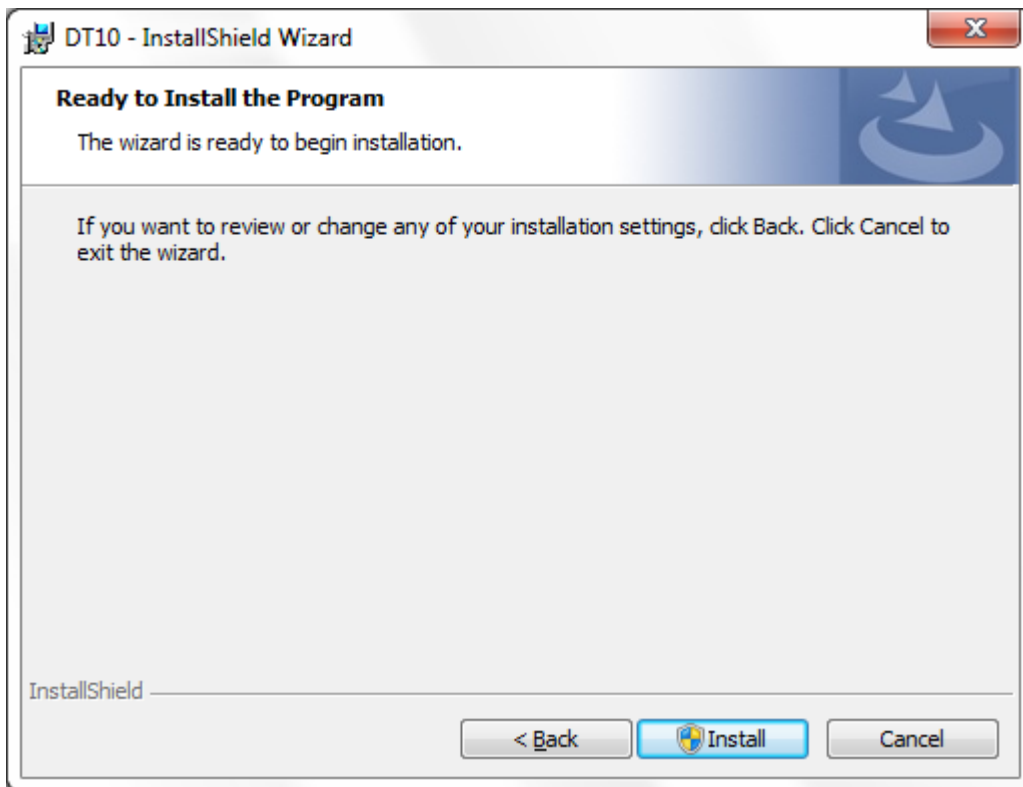


The default destination folder specified is “[Program Files (x86) Path]HeartLandData\DT10”.

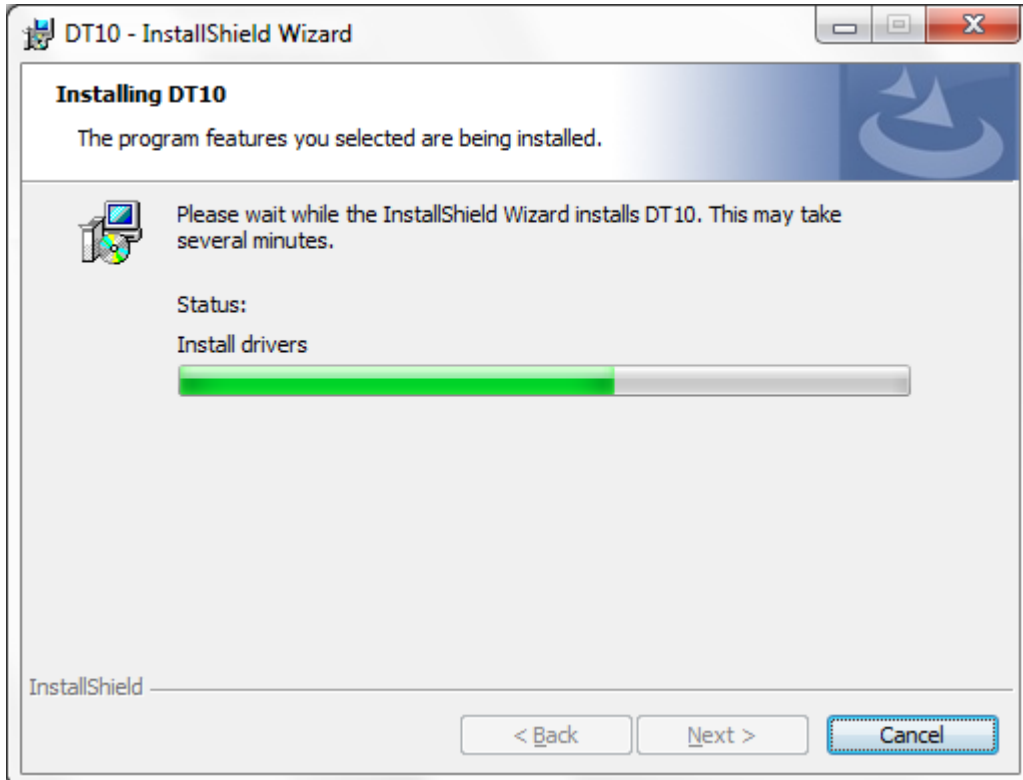
[Program Files (x86) Path] depends on the PC (driver name of the booted OS and so on). If you wish to change the specified folder, click the “Change” button and specify the folder.

After you have confirmed the installation folder, click the “Next” button.

The “Ready to Install the Program” view is displayed.

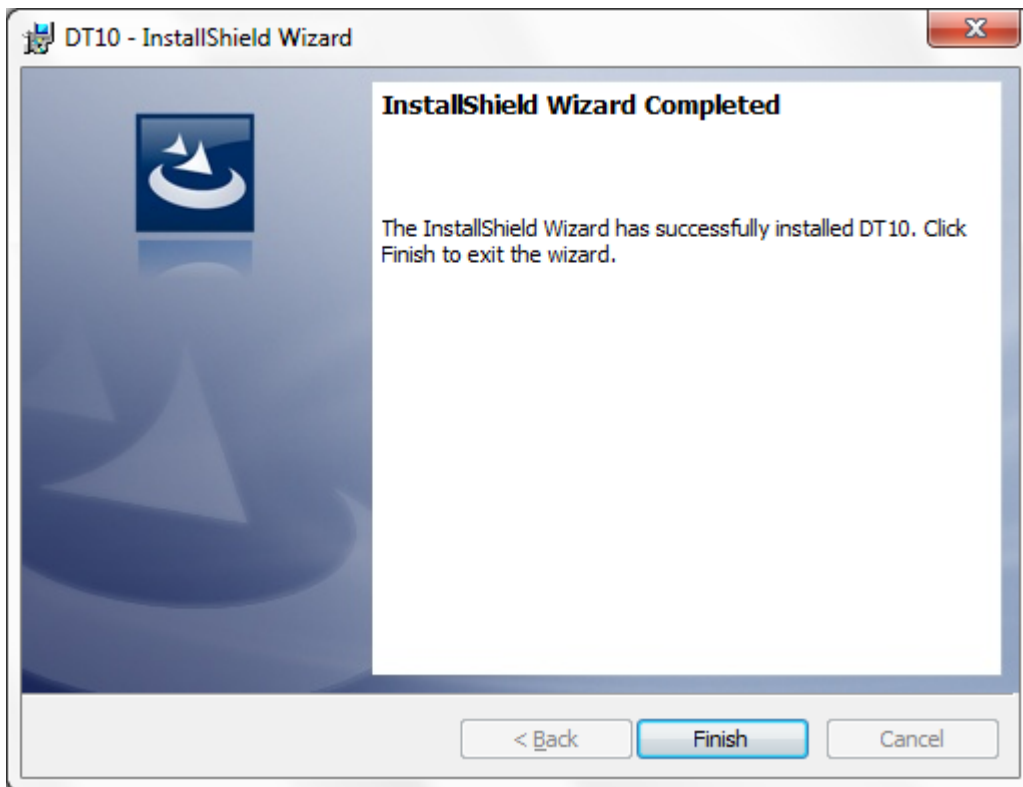


If you wish to install it with the current setup, click the “Install” button.



The installation time depends on your PC environment. It may range from a few seconds to a few minutes.

When the DT10 installation is successfully completed, the following view is displayed:



Click the "Finish" button and the setup is complete.

1.5. Setup of the USB driver of DynamicTracer (For Windows 7)

USB setup for the DynamicTracer is needed.

Connect the DynamicTracer to the PC and switch it on, whereupon the USB driver is installed.



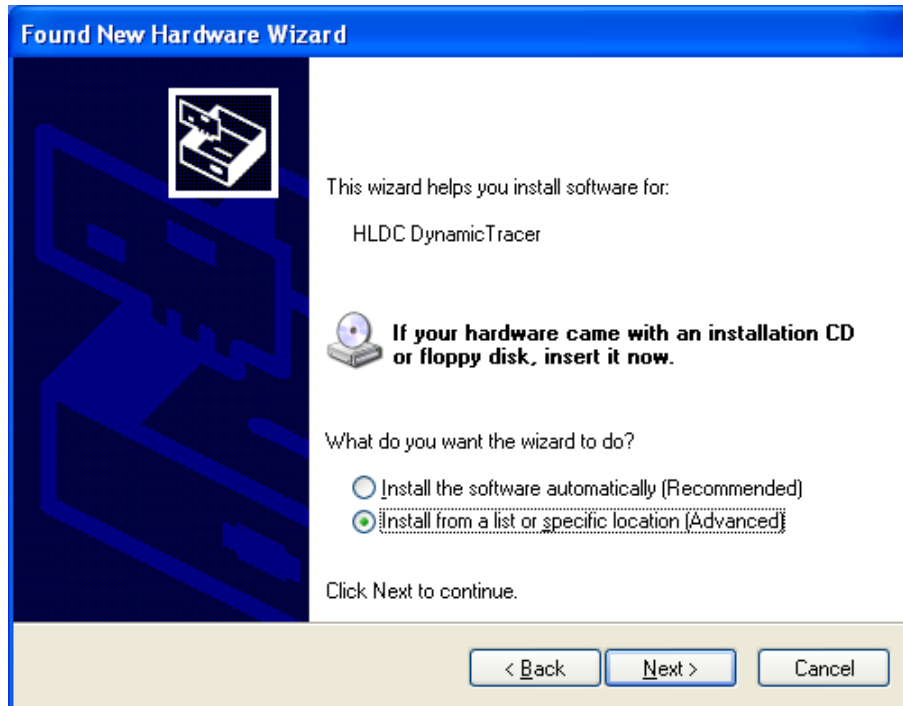
Caution

In Windows 7, the USB driver is not automatically installed. Please do so manually and refer to [1.6.Troubleshooting for the installation].

The “Found New Hardware Wizard” view is displayed.

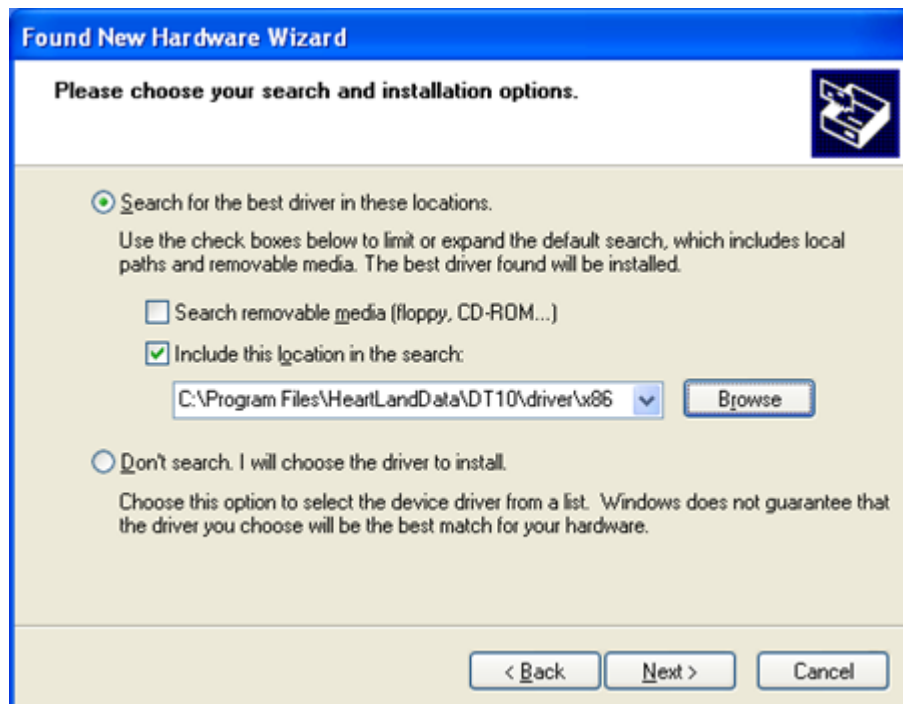


Select the “No, not this time” option and click the “Next” button.



The installation method selection view is displayed. Select “Install from a list or specific location (Advanced)” and click the “Next” button.

The search option view is displayed.



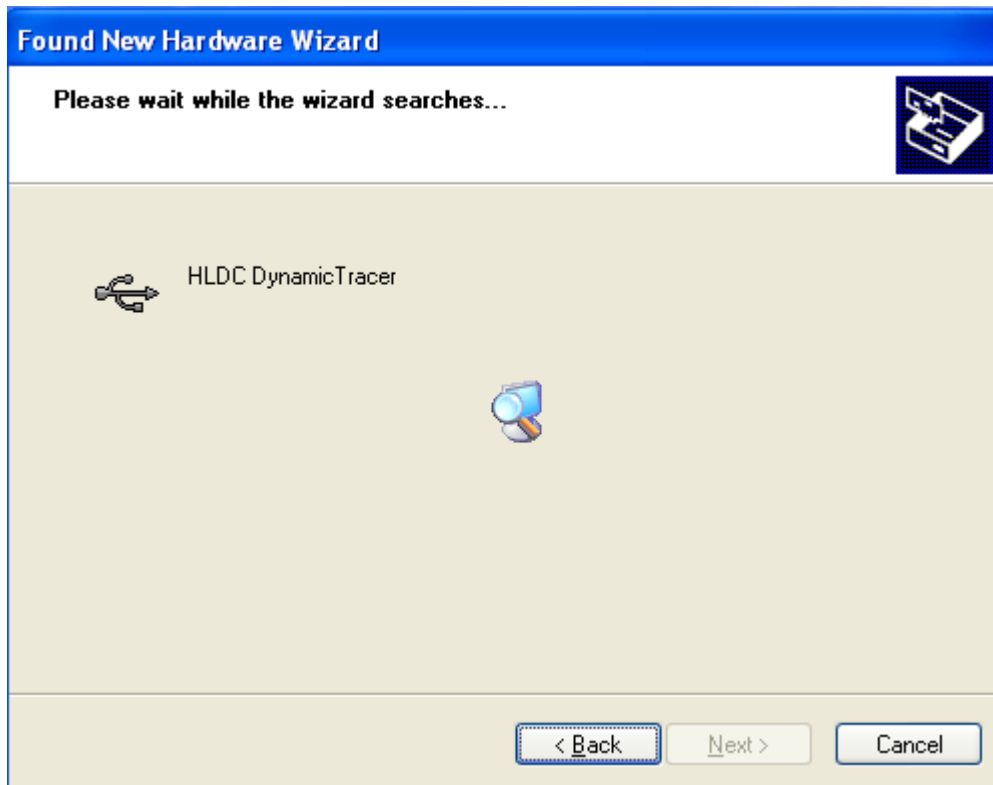
Select “Search for the best driver in these locations” option and check “Include this location in the search” checkbox.

Click the “Browse” button to specify the search folder.

For 32 bit OS, Specify “driver\Win7\x86” from the DT10 install folder.

For 64 bit OS, Specify “driver\Win7\x64” from the DT10 install folder.

After specifying, click the “Next” button.

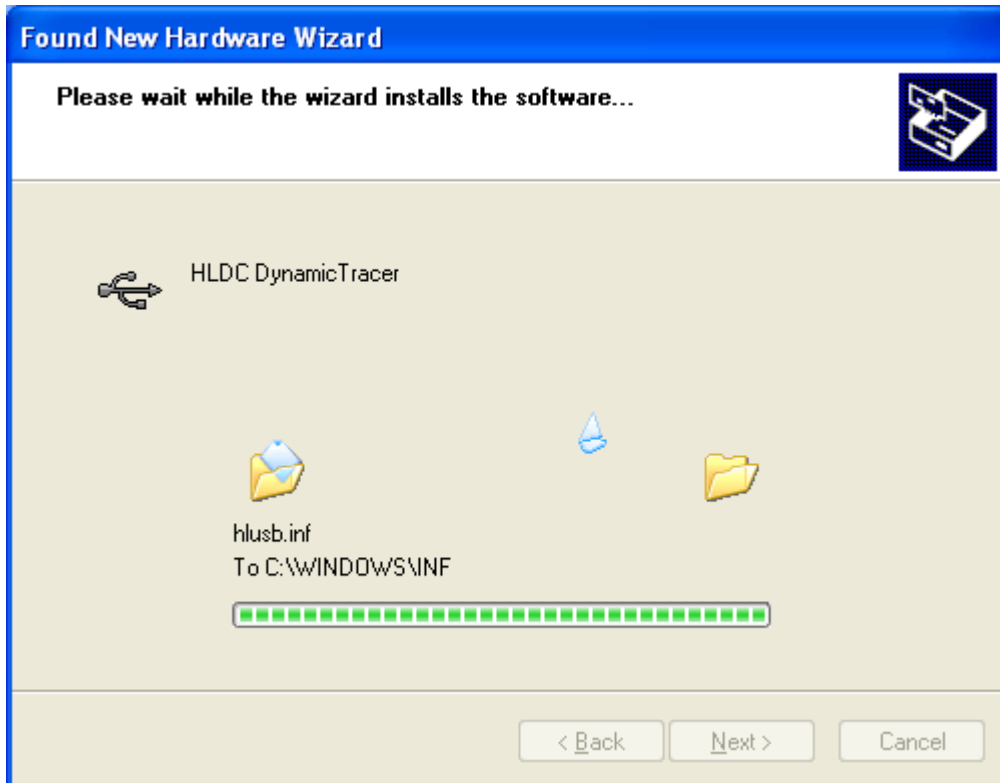


The PC searches for drivers, which may take a few seconds or a few minutes depending on the PC.

The installation view of the driver found in the search is displayed.

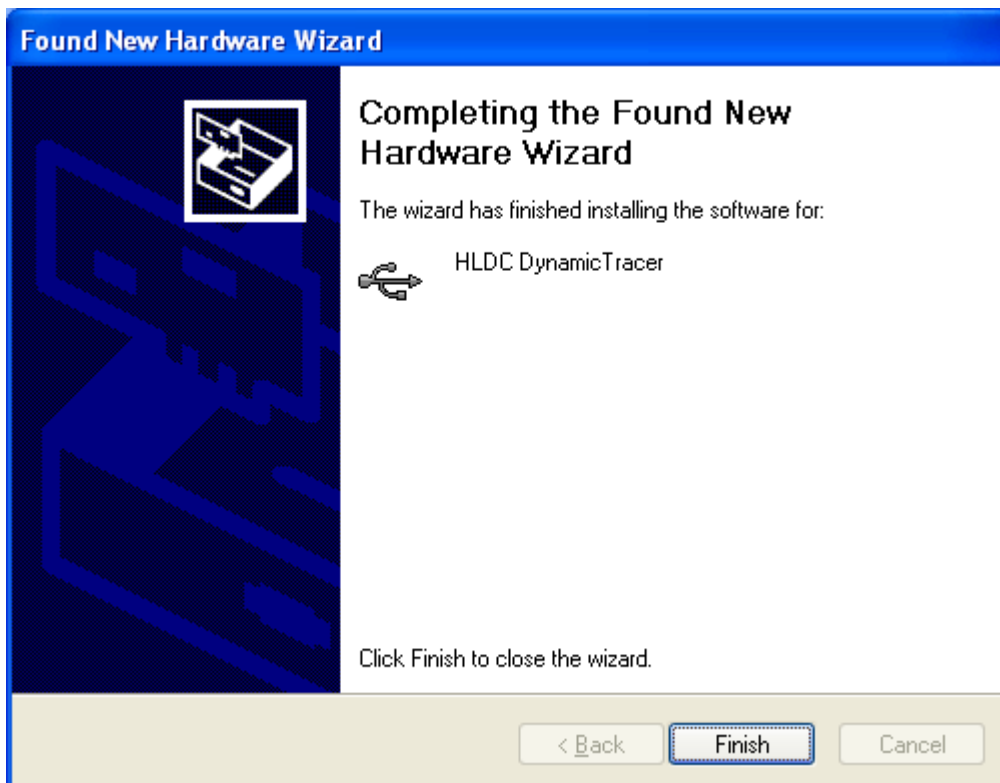


Click the "Continue" button.

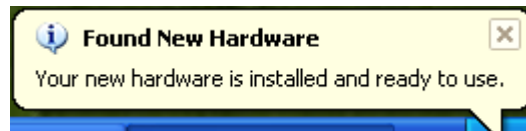


The PC searches for drivers, which may take a few seconds or a few minutes depending on the PC.

Complete the installation, whereupon the "Complete view" is displayed.



Click the "Finish" button to end the installation step.



In this setup, you can collect the Test Report using a DynamicTracer with DT10.

If reconnecting a USB that has already been recognized, the above processes are not repeated.

However, if the connected port is changed, those processes will be repeated.

1.6. Setup of the USB driver of DynamicTracer(For Windows8/8.1 and Windows10)

USB setup of DynamicTracer is needed.

Connect the DynamicTracer to the PC and switch it on, then USB device driver is installed automatically via Windows Update.



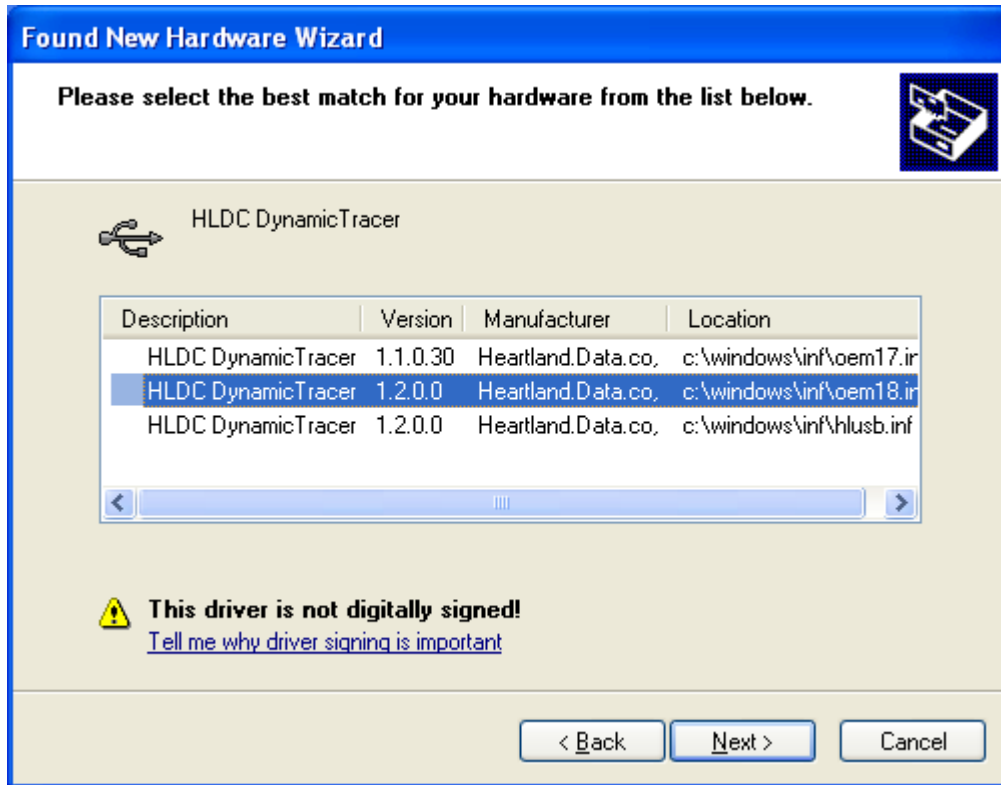
Caution

In Windows8 or 8.1 and Windows10, if the machine does not connect to the network, or the setting is not to install Windows update automatically, the installation is needed manually. Please refer to [1.7. Troubleshooting for the installation] for more details.

1.7. Troubleshooting for the installation

<< Caution for USB driver setup of the DynamicTracer >>

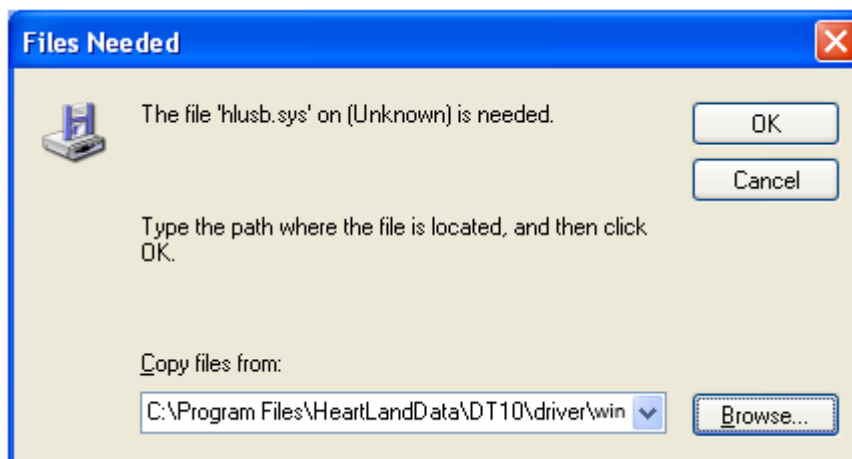
When the USB driver of the DynamicTracer has already been set up, if you attempt to set up the driver again, the following view may be displayed when searching for the driver:



The displayed contents depend on the PC state.

When this view is displayed, select "hlsusb.inf". (* In the case of Windows 8 / 8.1 and Windows10, please select "cyusb.inf".)

The following view may be displayed when installing the driver:



Click the "Browse" button and specify the file for the each OS in "driver" folder in the DT10 install folder.

<< Failure to install “Microsoft Visual C++ 2017 Redistributable.” >>

If an error occurs before the application setup, or when booting up DT10, the installation of “Microsoft Visual C++ 2017 Redistributable.” may have failed.

Please execute the installer of “Microsoft Visual C++ 2017 Redistributable” directly.

The installer is “ISSetupPrerequisites\vc\credist_x86.exe.”

If the installer does not work, your “vc\credist_x86.exe” may have a problem.

Please download “Microsoft Visual C++ Redistributable for Visual Studio 2017” from the following URL and try to execute it:

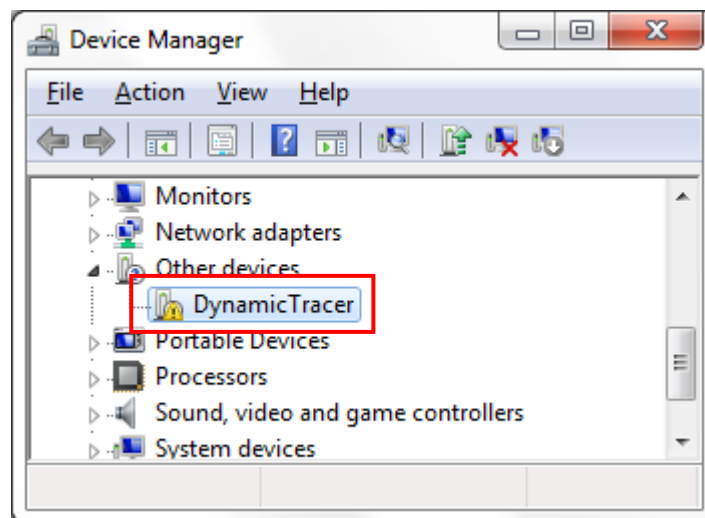
<https://visualstudio.microsoft.com/vs/older-downloads/>

<< Installation of the USB device driver may not automatically execute >>

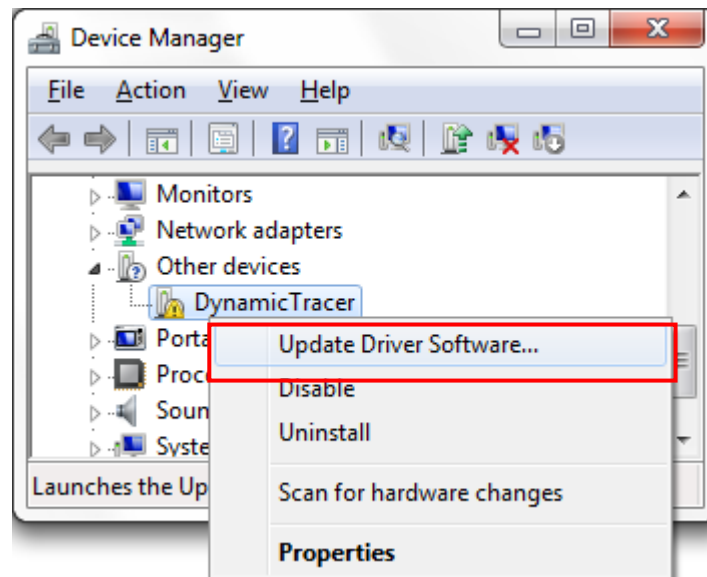
In Windows 7, if you connect the DynamicTracer to a PC and turn it on, the USB device driver is not automatically installed and must be installed manually.

The next steps show you how to do this:

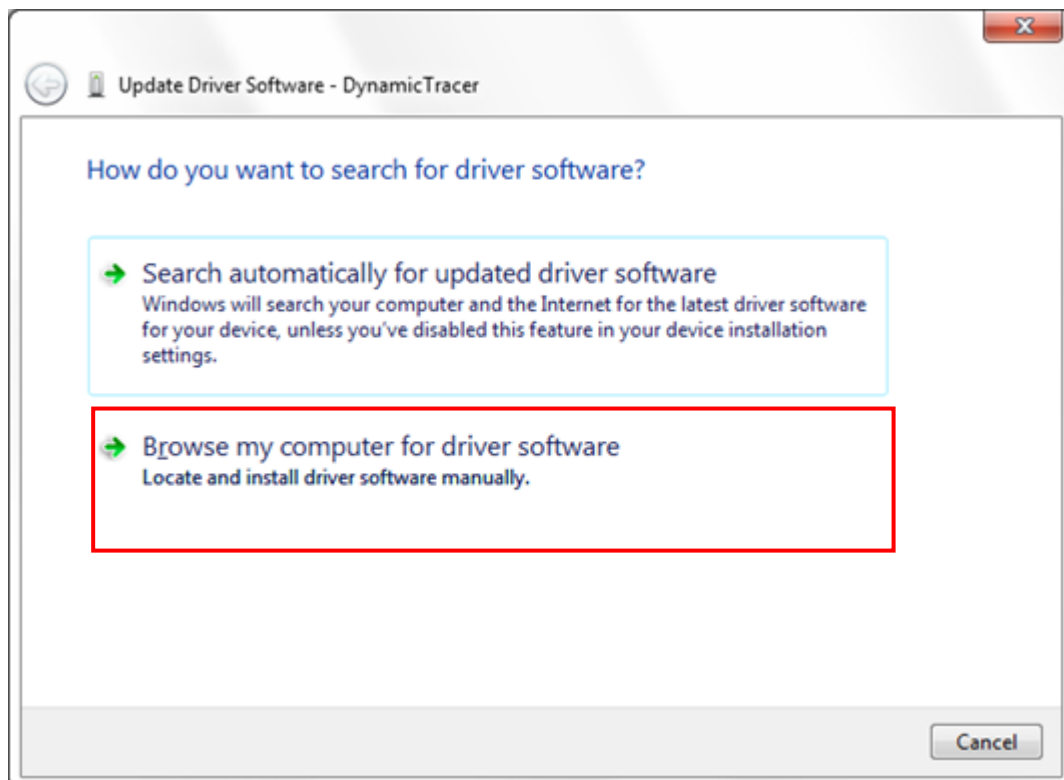
1. Open the [Device Manager] in the Control Panel.
2. Find the [DynamicTracer] device in the Device Manager.



3. Right-click on the [DynamicTracer] device and click on "Update Driver Software" from the displayed menu.

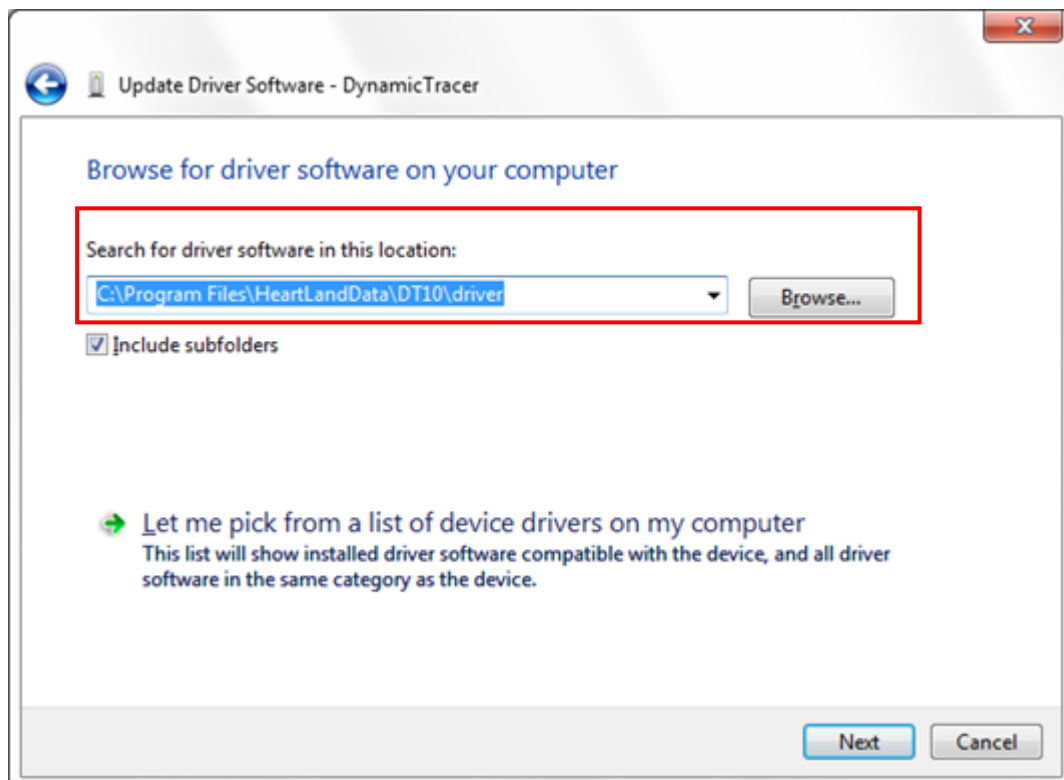


4. Select "Browse my computer for driver software" from the "Update Driver Software" dialog.

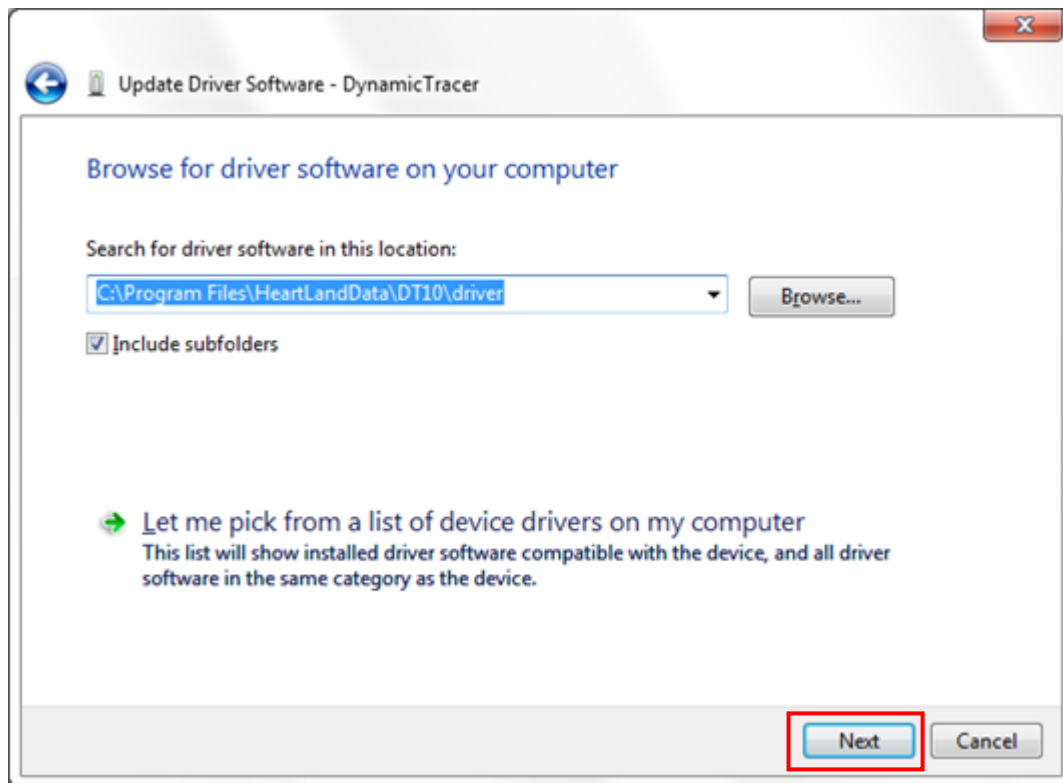


5. Click the “Browse” button to specify the [driver] folder in the DT10 install folder as the search target.

- Windows7 (32bit) : C:\Program Files\HeartLandData\DT10\driver\win7\x86
- Windows7 (64bit) : C:\Program Files (x86)\HeartLandData\DT10\driver\win7\x64
- Windows8 (32bit) : C:\Program Files\HeartLandData\DT10\driver\win8\x86
- Windows8 (64bit) : C:\Program Files (x86)\HeartLandData\DT10\driver\win8\x64
- Windows8.1 (32bit) : C:\Program Files\HeartLandData\DT10\driver\win8.1\x86
- Windows8.1 (64bit) : C:\Program Files (x86)\HeartLandData\DT10\driver\win8.1\x64
- Windows10 (32bit) : C:\Program Files\HeartLandData\DT10\driver\win10\x86
- Windows10 (64bit) : C:\Program Files (x86)\HeartLandData\DT10\driver\win10\x64

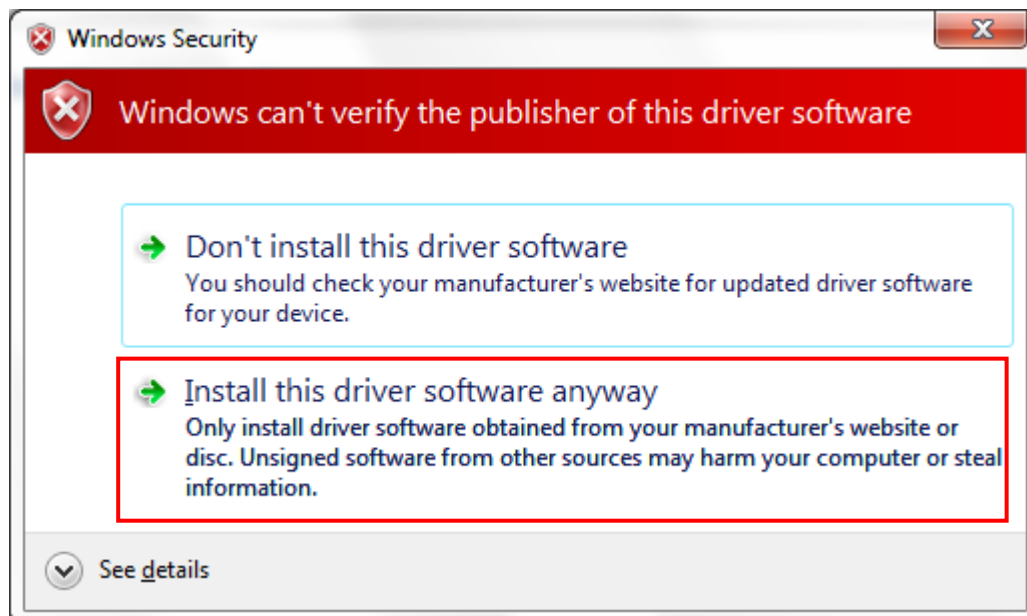


6. Click the “Next” button.

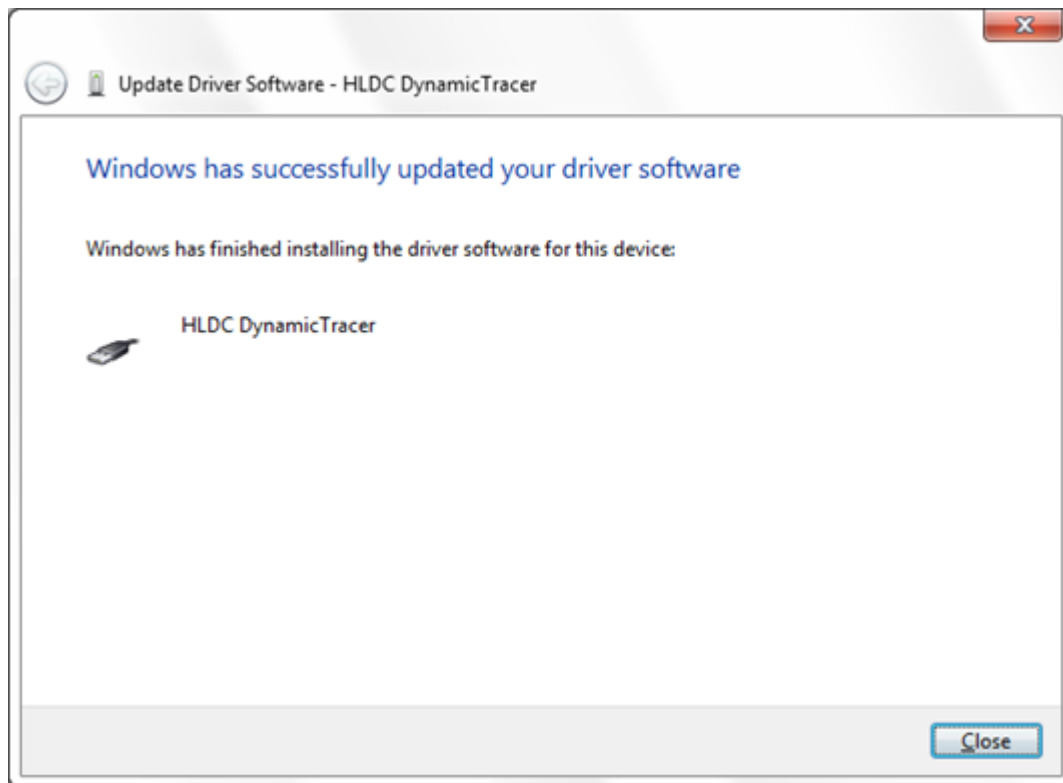


7. The USB driver installation starts.

8. If a warning like the following is displayed, select “Install this driver software anyway.”



9. The following view is displayed when the driver installation is complete:



10. Click the "Close" button to end the installation step.

<< If the DT10 still does not work >>

Check with another PC.

If the DT10 still does not work, please contact our support department:

Heartland.Data Inc.

User Support

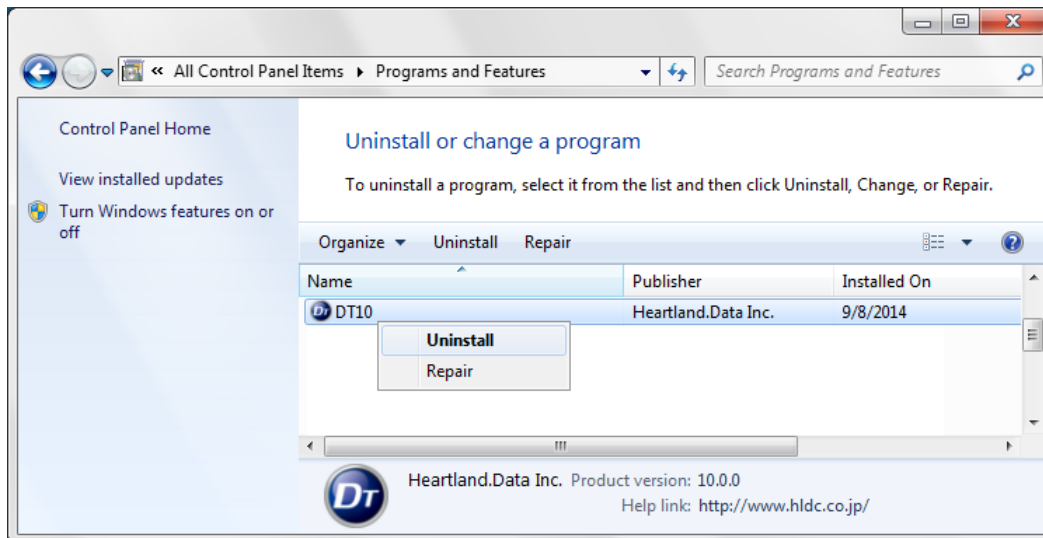
URL: heartlanddata.com

1.8. Uninstallation of DT10

1.8.1. Uninstall by “Add or Remove Programs”

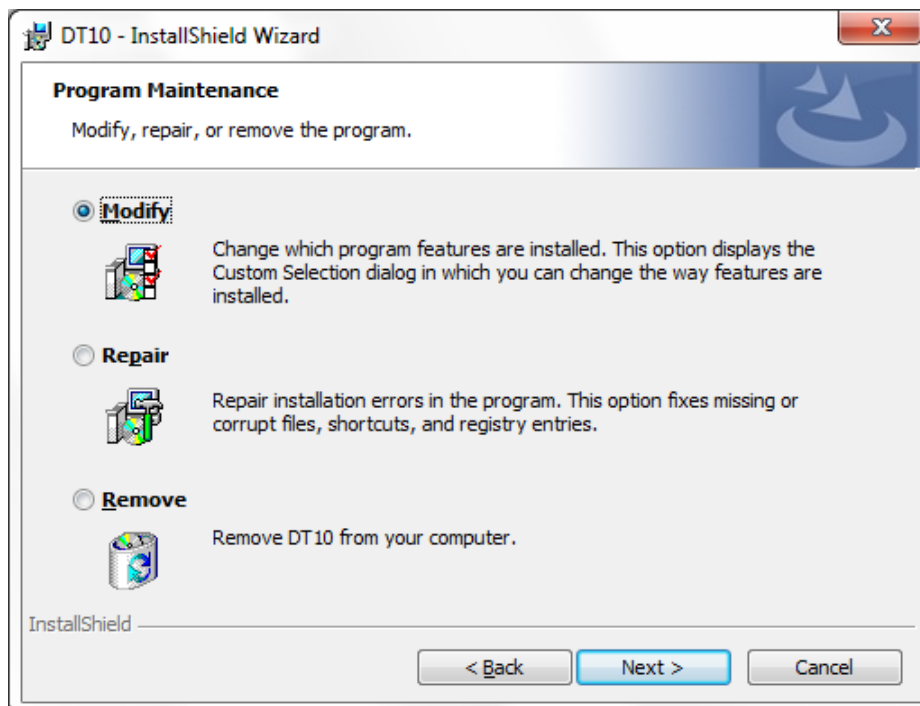
Select “DT10” from “Control Panel” ->“Add or Remove Programs”, and delete it.

Proceed in this way to uninstall DT10 applications up to Ver.1.52.



1.8.2. Uninstall by “setup.exe”

Use “setup.exe” that can be used to install or uninstall DT10.

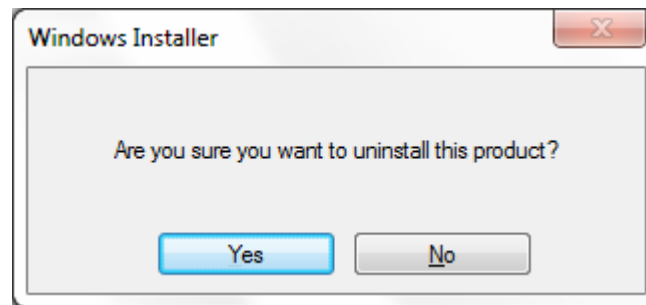


“Program Maintenance” view is displayed and then select “Remove” to uninstall DT10.

1.8.3. Uninstall by “DT10 Uninstaller”

Select **[Program Menu > DT10 > Uninstall]** to boot up the uninstaller.

DT10 can be uninstalled by executing the uninstaller.



Select "Yes" in "Windows Installer" to continue execution.

2. Setup for Nodelock License

2.1. Setup for nodelock license

A **nodelock license file** for the specific machine is needed to introduce.

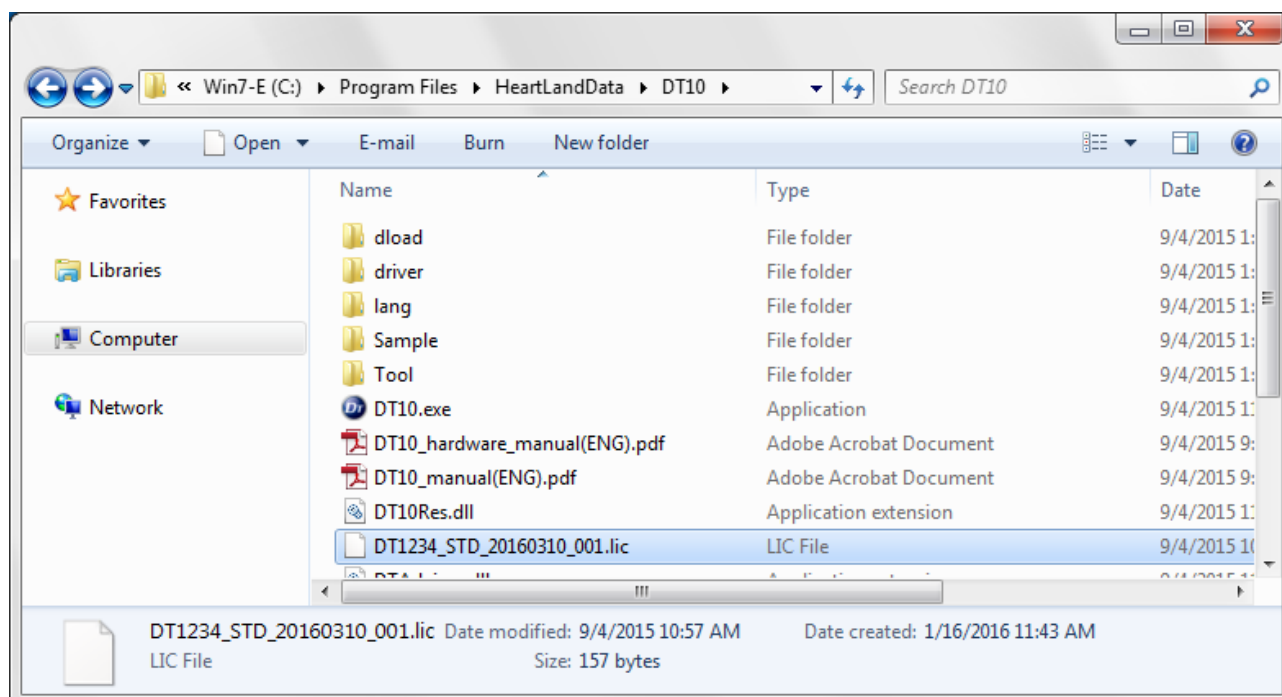
1. Please put the license file in the installation folder of DT10.exe.


The installation folder is "[Program Files Path]HeartLandData\DT10" in the default setting.

* [Program Files Path] depends on the machine (Drive name of the boot OS and so on).

2. After putting the license file to the folder, please start DT10 application.

And the activation is completed if the application starts as "Standard Edition".



 Caution	<p>The license file is for the only machine that preferred to our support.</p> <p>Please contact us when the republication of the license file is needed because the machine is replaced, the machine has broken, and some reason.</p>
	<p>The application is NOT available via terminal services like "Remote dektop connection" of Windows.</p>
	<p>Please delete the expired license file from the folder.</p>
	<p>The nodelock license might NOT work incorrectly in case the application does not start as "Standard Edition".</p> <p>Please refer to [2.3 Troubleshooting of nodelock license] for more details.</p>

2.2. License update

Save the new nodelock license in the save folder of the old one.

Please ensure to delete the old one. If it leaves, the new one is NOT validated.

2.3. Troubleshooting of nodelock license

<< The application starts as "Free Edition" >>

DT10 starts as "Free Edition" if the license is invalid.

The license is NOT valid in the following cases.

- **The save folder of the license file is incorrect**

-> Please ensure that the file is saved in the installation folder of DT10 application.

- **The expired license file is NOT deleted**

-> Please delete the expired one.

- **MAC address that preferred to our support is incorrect**

-> Please ensure that the MAC address of the machine is same to the one that preferred us.

Please refer to [2.4 Confirmation of the unique information of the machine] for the details to confirm the address

2.4. Confirmation of the unique information of the machine

[Windows]

1. Please execute "ipconfig/all" command in the command prompt.
2. In the result, physical address is MAC address, and IPv4 address is IP address.

Example > ipconfig/all

```
Host name . . . . . : Server (Host name)
-
Physical address . . . . . : 00-12-34-AB-CD-E5 (MAC address)
-
IPv4 address . . . . . : 192.168.###.### (IP address)
```

[Linux]

1. Please execute "hostname" command from the terminal and confirm the host name.
2. Also, please execute "/sbin/ifconfig eth0" command and confirm the result.

In the result, physical address is MAC address, and IPv4 address is IP address.

"Hwaddr" is MAC address, and "inet addr" is IP address.

Example : \$hostname

```
"Server (Host name)"
```

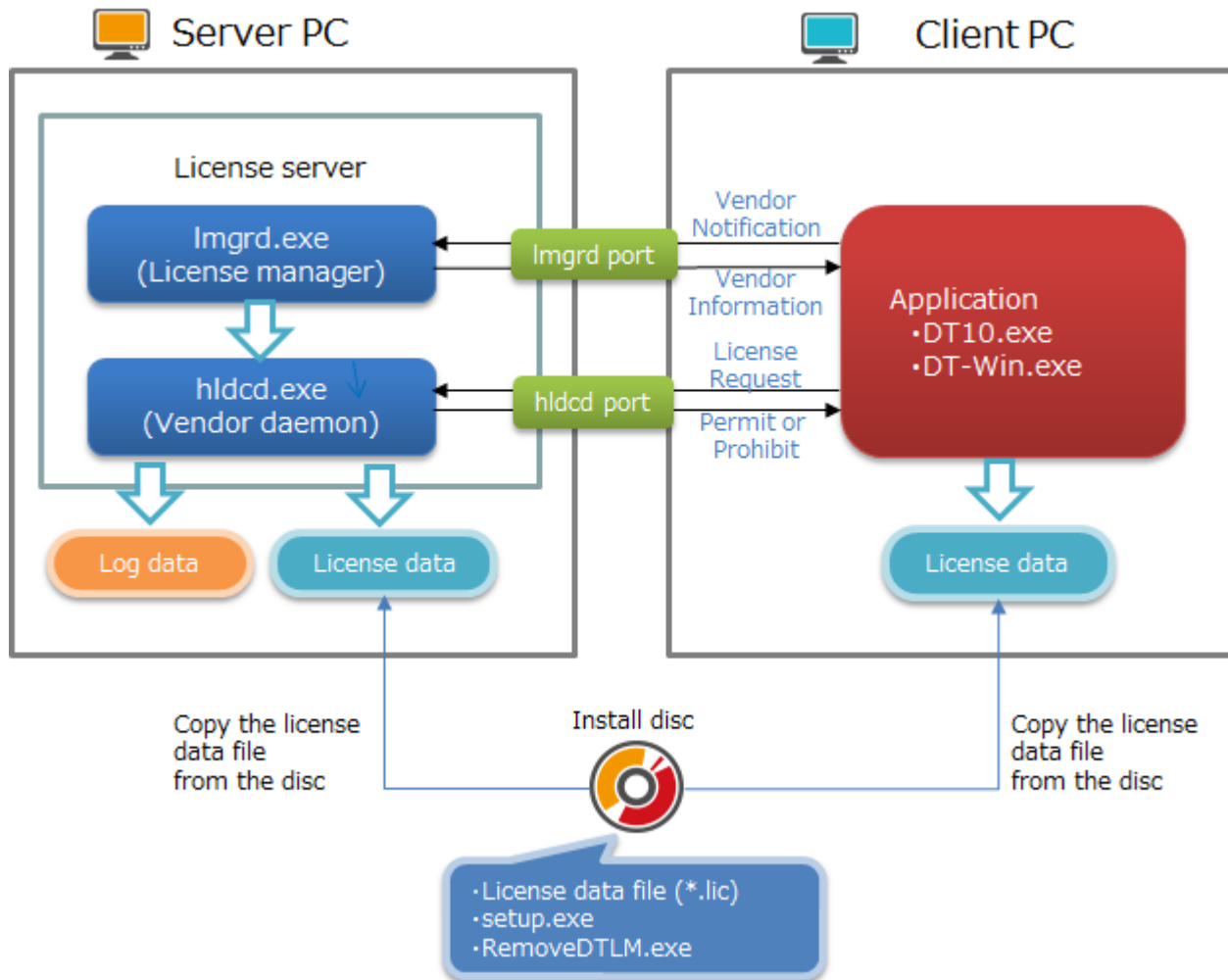
```
$/sbin/ifconfig eth0
```

```
eth0 Link encap:Ethernet HWaddr 00:12:34:AB:CD:E5 (MAC address)
inet addr:192.168.###.### (IP address)
```

3. Setup of floating license

3.1. Architecture of floating license

The floating license system of Dynamic Test Tool uses the license management system "FlexNet Publisher (former product name : flexlm)" sold by Flexera Software. The architecture of floating license system is like the following.



License server consists of 2 tools "lmgrd.exe" and "hldcd.exe".

"lmgrd.exe" is a license manager management tool for each vendor offered by "Flexera".

"hldcd.exe" is a vendor daemon added a unique information of Heartland Data to framework offered by "Flexera".

The server PC refers a PC has these tools managing floating license.

(It is not need to be an OS like Windows Server.)

License data saved in specified place of client PC is accessed and server information or allowable edition is referred when the DT10 application is executed in the client PC.

License manager(lmgrd.exe) is accessed depends on this server information and information of a vendor daemon is required.

The application of client PC accesses vendor daemon (hldcd.exe) from this vendor daemon information.

The vendor daemon refers license data in the server PC and returns allowance or prohibition of the license to client PC.

3.2. Setup of Windows server

License server machine is required in case floating license system is used.

This chapter explains the preparation to install the service "DT10LicenseManager" required to use as license server and the way to install.

3.2.1. System Requirements

OS :


- Windows7
 - Windows8
 - Windows8.1
 - Windows10
- * Supports both 64 and 32 bit versions.

Server OS :

- Windows Server 2008
 - Windows Server 2012
 - Windows Server 2016
 - Windows Server 2019
- * Supports both 64 and 32 bit versions.

Computer main body :

- A personal computer equipped with a processor superior to Pentium 100 MHz or equivalent is recommended.
- Free space of 5 MB or more is recommended in the memory.
- Free space of 10 MB or more is necessary in a hard disc

 Caution	<p>Installation requires the user of an administrator.</p> <p>Install as an administrator.</p>
	<p>Operation at a virtualized environment (Hyper-V) is not assured.</p>
	<p>To use it via Terminal Services connection such as Windows Remote Desktop Connection, you need a license for Remote Desktop.</p> <p>Please contact your sales representative if you have any questions about license change or purchase.</p>

3.2.2. Confirmations before the installation

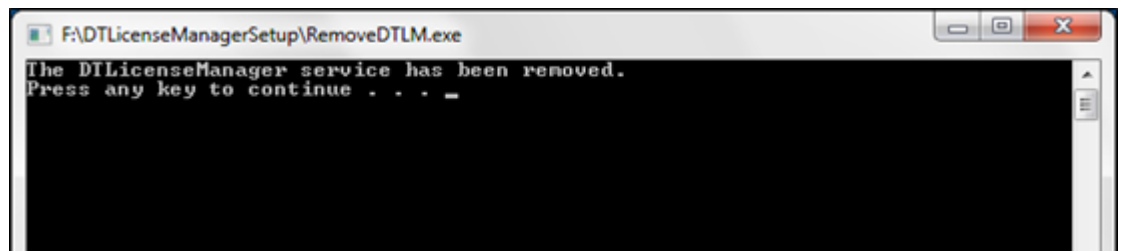
Please confirm the following 3 points about a PC to install DT10LicenseManager.

- 2 ports from 27000 to 27009 can be opened.
2 ports are used the ports from 27000 to 27009 for the license server.
- PC can restart.
PC restart is required after completing the installation.
- Ver. 1.01 or older of DT10LicenseManager is not installed.
Please uninstall it if it is used.

1. Execute "RemovedTLM.exe" in the installation disc.

Deletion of Windows service "DT10LicenseManager" begins when "RemoveDTLM.exe" is executed.

The process goes automatically. A message is displayed in command prompt when the deletion completed correctly.



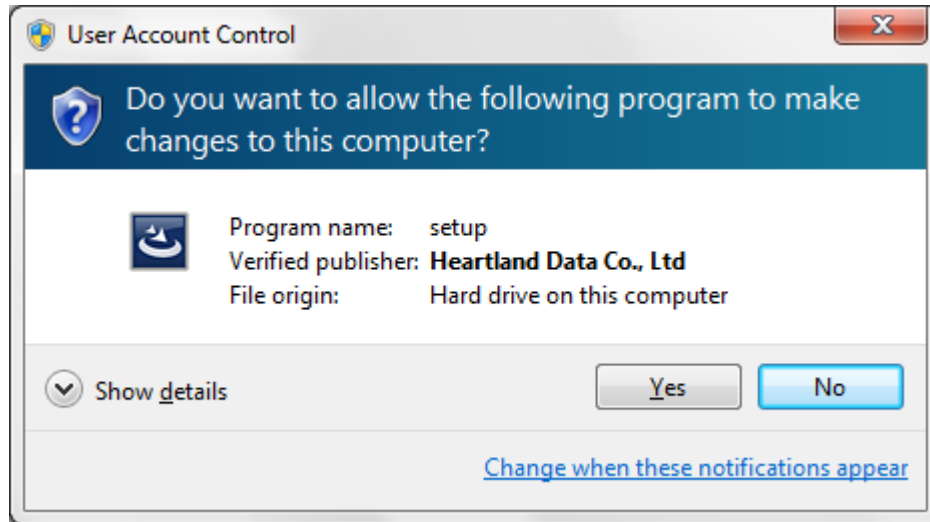
Press any key to close the window.

2. Uninstall DT10LicenseManager from "Programs and Features" in "Control Panel".
Please refer to [3.2.6. Uninstall DT10LicenseManager] for the uninstallation flow of DT10LicenseManager.

3.2.3. Installation of license manager

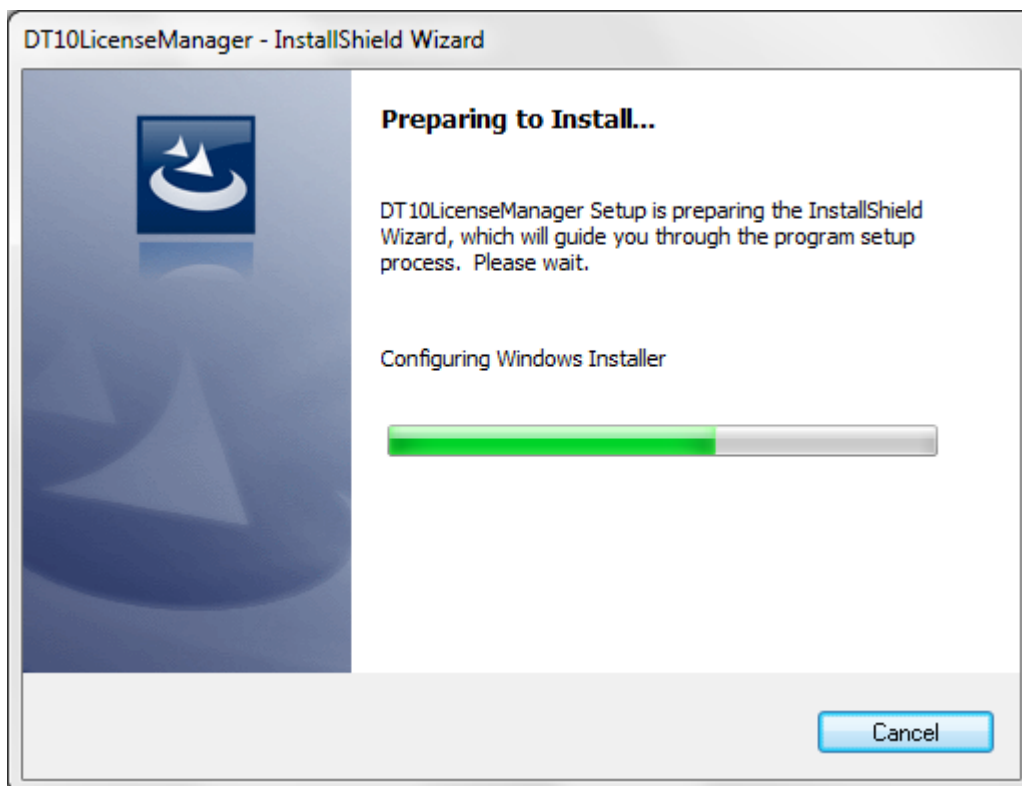
Execute "Setup.exe" in the installation disc.

"User Account Control" is displayed when starting the setup of DT10LicenseManager.

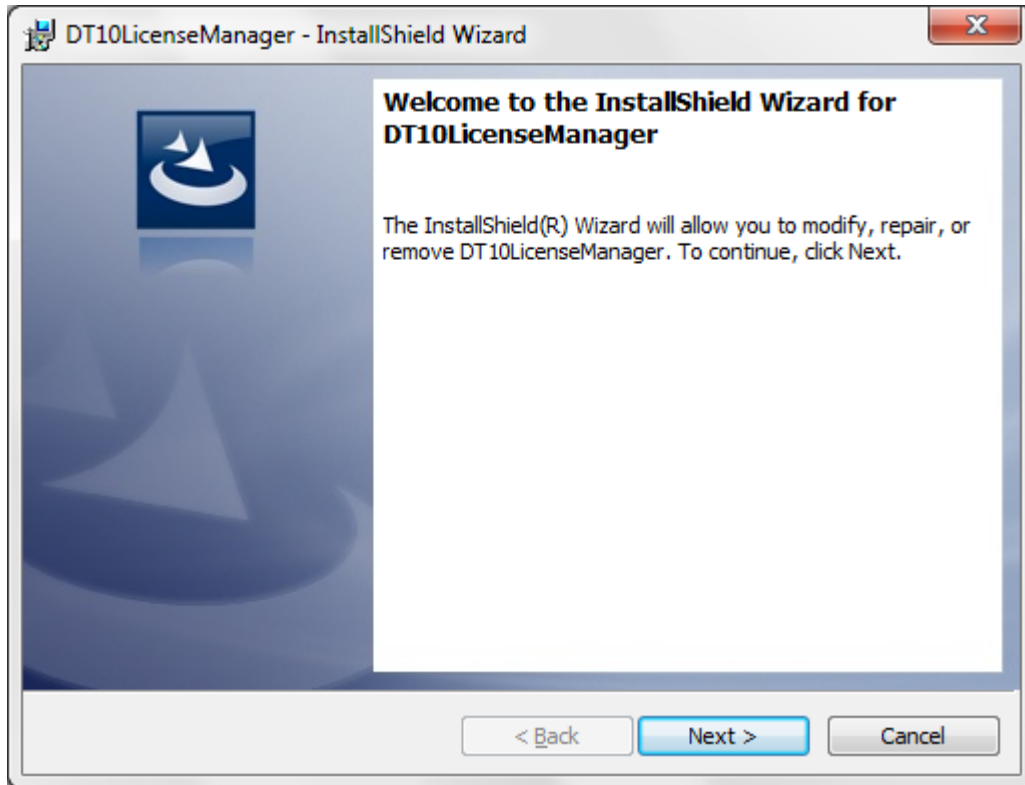


Select "Yes" after confirming the verified publisher.

Setup files are extracted automatically.

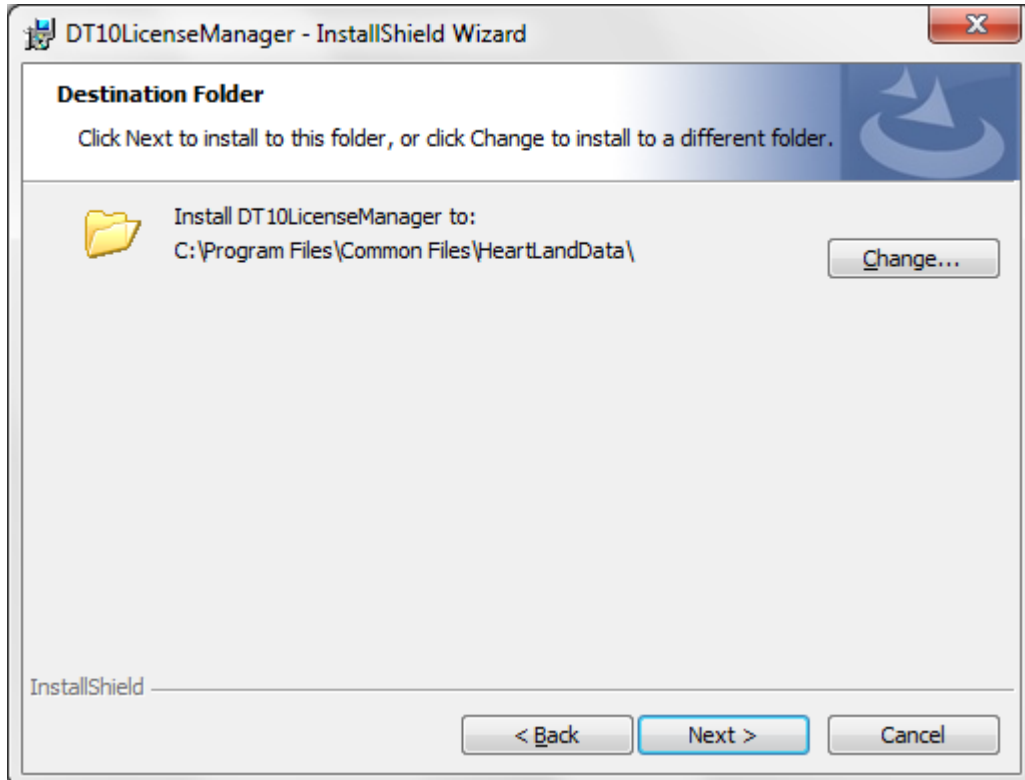


"Welcome" message is displayed after the extraction and the installation preparation is completed.



Click "Next".

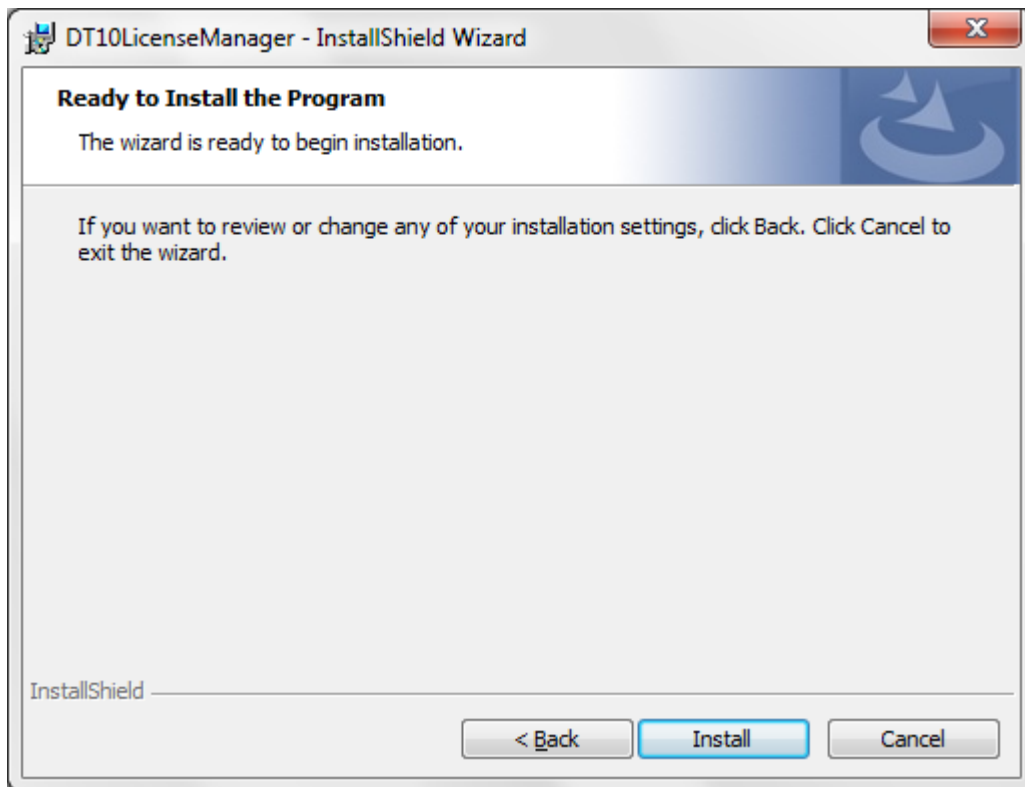
This is displayed to select an installation folder.



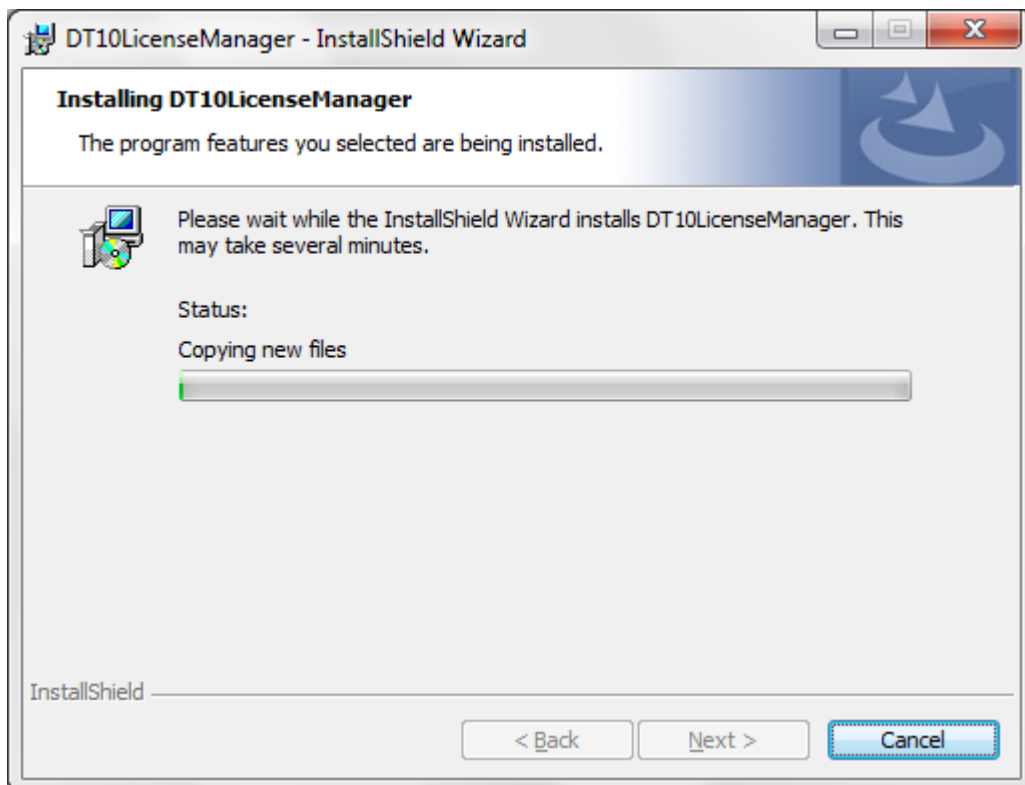
The installation folder is "[Common Files Path]HeartLandData" in the default setting. [Common Files Path] depends on the machine (Drive name of boot drive). Click "Change" and select other folder in case the folder is changed.

Please click "Next" after the folder is selected.

"Ready to Install the Program" is displayed.



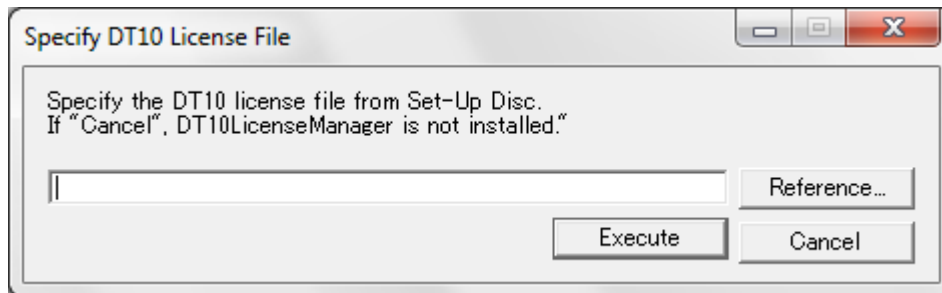
Click "Install" to start the installation by the contents of the settings



The installation depends on the machine condition. It takes seconds to minutes.

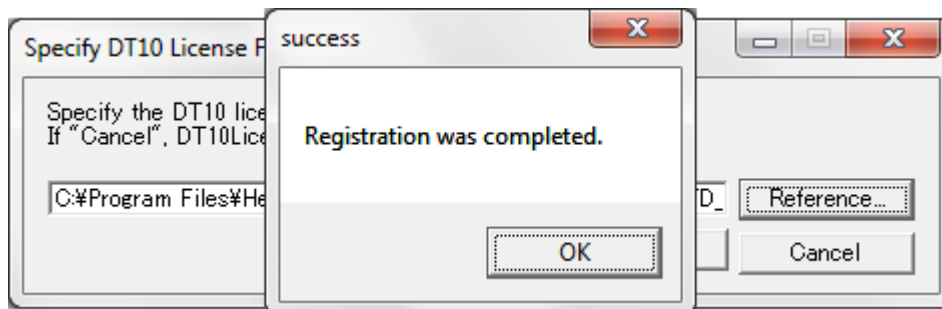
"Specify DT10 License File" dialog box is displayed automatically after the finish of copy status of new files.

This dialog box is always displayed in foreground during the opening.



"Select a License File" dialog box is displayed when "Reference..." button is clicked. Please select a DT10 license file (*.lic) attached in an install media. This edit box also can be input directly.

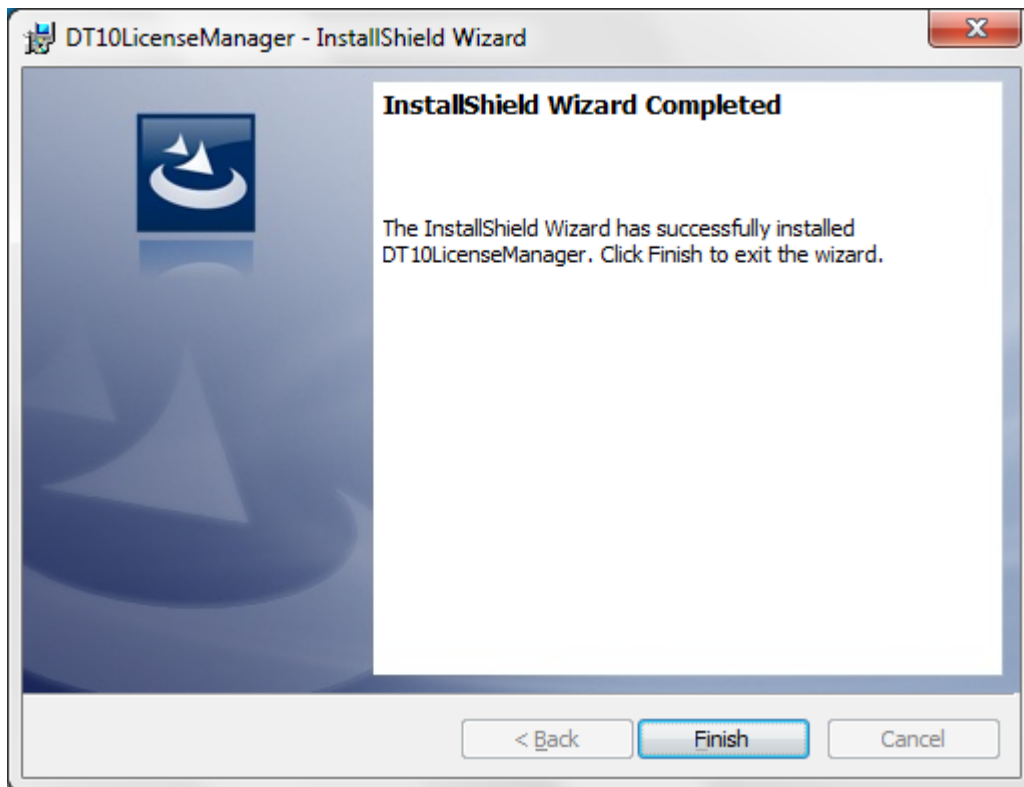
Click "Execute" button after the confirmation of DT10 license file path in the edit box.



The installation of "DT10LicenseManager" and the service registration are completed correctly if "success" message is displayed.

Click "OK" button of "success" message.

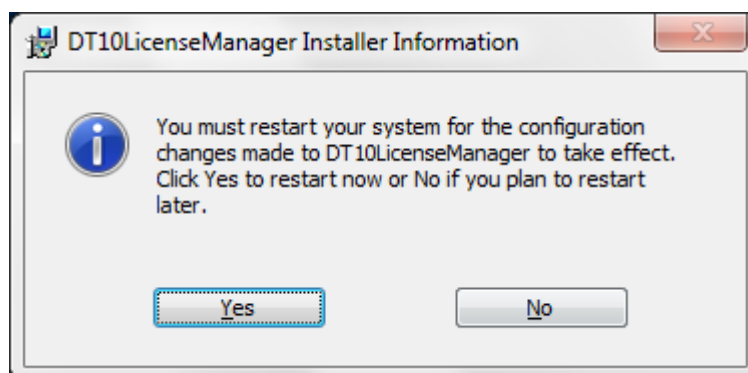
The following is displayed if "DTLicenseServer" is installed correctly.



Click "Finish" button.

The message to restart is displayed. Please click "Yes" to restart.

The installation finishes completely if "No" is clicked in this message and automatic restart is not executed. But DT10LicenseManager service starts automatically after the next start of the machine.



The installation is finished by this step.

3.2.4. Setup of a client PC

This chapter explains the way to setup the client PC executes the application.

First, install the application (DT10) in the client PC.

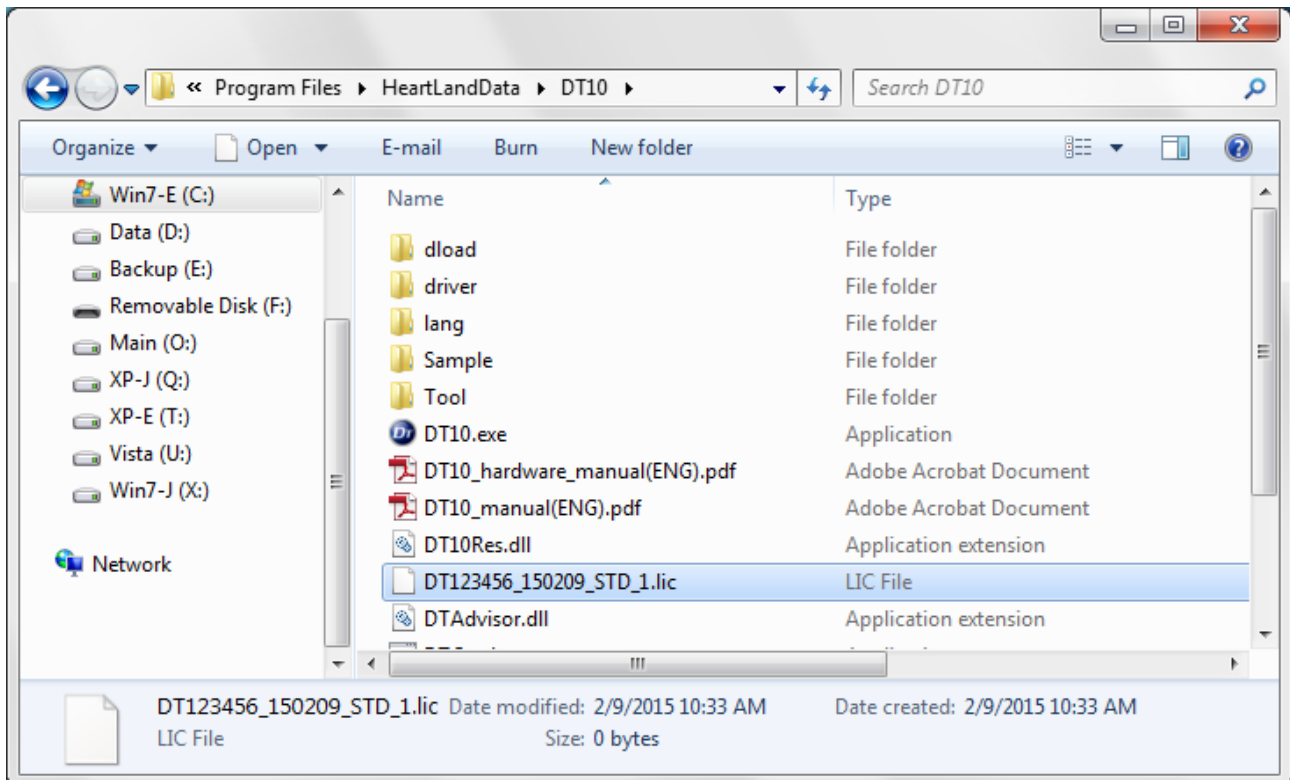
Please refer to [1. Installation of DT10] for more details of the installation.

Copy the License data file to the installation folder after the installation of the application.

The default setting of the installation place is the followings.

*[Program Files Path] depends on the machine (Drive name of boot OS and so on)

DT10 : [Program Files Path]HeartLandData\DT10



3.2.5. Licensing confirmation

Start the DT10 application on the client PC.

"Standard Edition" is shown on the upper-right of starting display if the license works correctly.

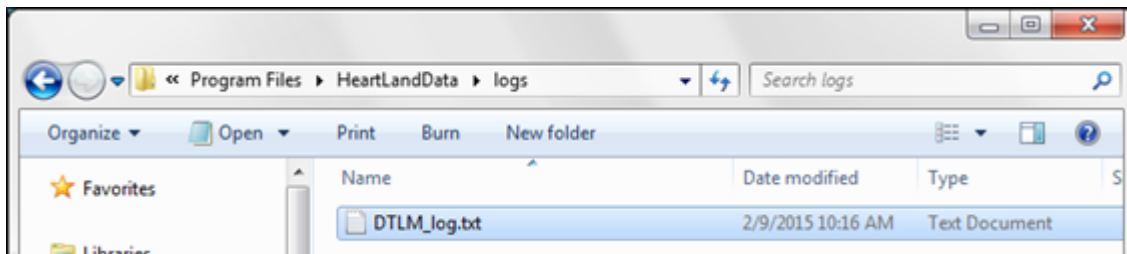
In case the license is invalid or works incorrectly, "Free Edition" is shown.



Moreover, the confirmation also can be from log file created from the server PC.

Open "logs" folder in the installation folder of the license manager.

(The folder place is "%Program Files%Common Files%HeartLandData%logs" of the boot drive in the default setting)



The log file content becomes like [Fig.3.2.5 Confirmation of the log file] if Check-out or Check-in is done correctly from the client machine.

Please refer to [3.6 Troubleshooting for the floating license] if the application can not start as "Standard Edition".

Fig.3.2.5 Confirmation of the log file

```
15:52:02 (lmgrd) -----
15:52:02 (lmgrd) Please Note:
:
:
15:52:02 (lmgrd) -----
15:52:02 (lmgrd)
15:52:02 (lmgrd)
15:52:02 (lmgrd) pid 1924
15:52:02 (lmgrd) Done rereading
15:52:02 (lmgrd) FLEXnet Licensing (v11.10.0.0 build 95001 i86_n3) started on FTPSRV(IBM PC) (11/8/2013)
15:52:02 (lmgrd) Copyright (c) 1988-2011 Flexera Software, Inc. All Rights Reserved.
15:52:02 (lmgrd) US Patents 5,390,297 and 5,671,412.
15:52:02 (lmgrd) World Wide Web: http://www.flexerasoftware.com
15:52:02 (lmgrd) License file(s): C:\Program Files\Common Files\HeartLandData\lic\DT123456_20131130_STD_1.lic
15:52:02 (lmgrd) lmgrd tcp-port 27000
15:52:02 (lmgrd) Starting vendor daemons ...
15:52:02 (lmgrd) Started hldcd (pid 1960)
15:52:02 (hldcd) FLEXnet Licensing version v11.10.0.0 build 95001 i86_n3
15:52:02 (hldcd) Using options file: "C:\Program Files\Common Files\HeartLandData\lic\hldcd.opt"
15:52:02 (hldcd) Server started on hldc-PC for:
15:52:02 (hldcd) DT10CSTD (consisting of:      DT10STD
15:52:02 (hldcd) DT10CVT)
15:52:02 (hldcd) EXTERNAL FILTERS are OFF
15:52:02 (hldcd) ALL FEATURES: INACTIVITY TIMEOUT set to 900 seconds
15:52:02 (lmgrd) hldcd using TCP-port 49155
15:53:38 (hldcd) TCP_NODELAY NOT enabled
15:53:38 (hldcd) OUT: "DT10CSTD" hldc@hldc-pc
15:53:38 (hldcd) OUT: "DT10STD" hldc@hldc-pc
15:53:57 (hldcd) IN: "DT10STD" hldc@hldc-pc
15:53:57 (hldcd) IN: "DT10CSTD" hldc@hldc-pc
```

Server Host

License file

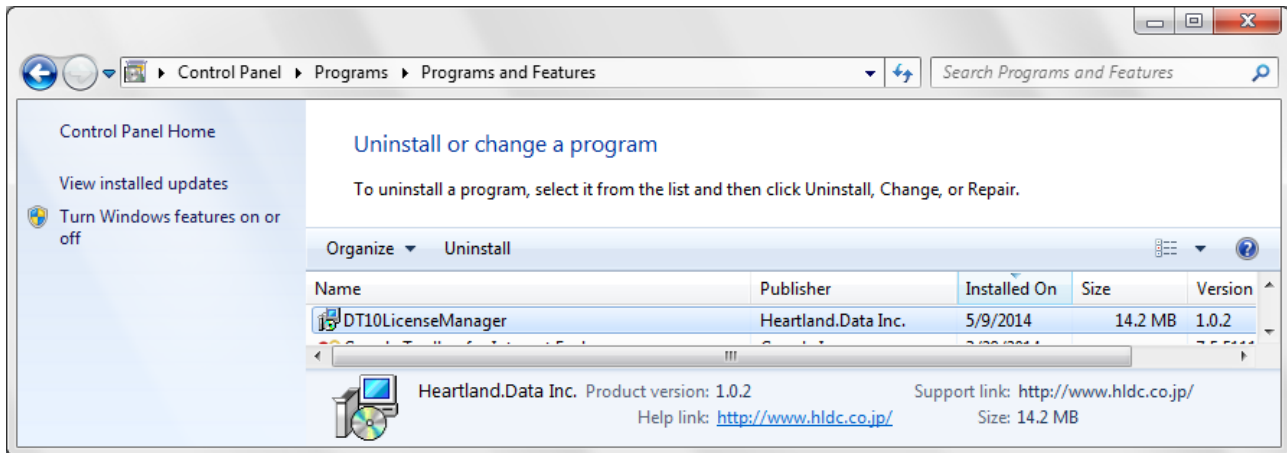
Check-Out from the client PC

Check-In from the client PC

3.2.6. Uninstall DT10LicenseManager

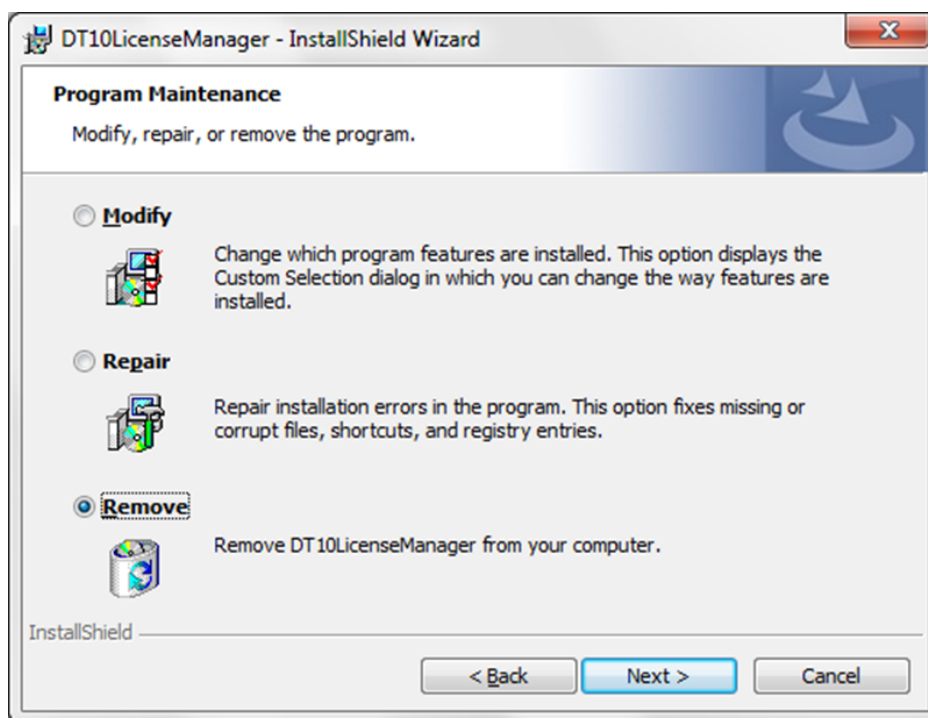
« Uninstall from "Uninstall or change a program" »

Please uninstall by selecting "DT10LicenseManager" from "Programs and Features" of "Control panel".




« Uninstall from "setup.exe" »

Installed DT10LicenseManager can be uninstalled by executing "setup.exe" used when setup.



Select "Remove" from "Program Maintenance" display and continue.

 Caution	<p>Please contact us if the machine used as DT10LicenseManager is desired to change.</p>
---	--

3.3. License update for Windows server

3.3.1. Update at the license server machine

Please update the license file by a way of the following.

<< Update by the license manager control tool “LMTOOLS” >>

1. Please start “lmtools.exe” in the installation folder of the license manager
(The default is “¥Program Files¥Common Files¥HeartLandData¥” of the boot disk.)
2. Click the tab “Config Services” of LMTOOLS window.
3. Select the license data file from the file selection dialog box displayed by clicking “Browse” button of “Path to the license file item.”
4. Close the LMTOOLS window.
5. Please select “Yes” in the message “Would you like to save the settings for the service?”
6. Restart the server machine.

3.3.2. Update at the client machine

- Delete the old license file (.lic) in the installation folder.

DT10 : [Program Files Path]HeartLandData¥DT10

* [Program Files Path] depends on the machine (Drive name of boot OS or so on)

- Copy the new one (.lic) in the folder.

3.3.3. Lisencing confirmation

Please refer to [3.2.5 Licensing confirmation].

3.4. Setup of a linux server

License server machine is required in case floating license system is used.

This chapter explains the preparation to install the service "DT10LicenseManager" required to use as license server and the way to install.


3.4.1. System Requirements

OS :

- Red Hat Linux
- SUSE Linux
- * Supports both 64 and 32 bit versions.
Current available version is recommended regardless of the version.

Computer main body :

- A personal computer equipped with a processor superior to Pentium 100 MHz or equivalent is recommended.
- Free space of 5 MB or more is recommended in the memory.
- Free space of 10 MB or more is necessary in a hard disc

 Caution	Installation requires the user of an administrator. Install as an administrator.
	Operation at a virtualized environment (Hyper-V) is not assured.
	To use it via Terminal Services connection such as Windows Remote Desktop Connection, you need a license for Remote Desktop.
	Please contact your sales representative if you have any questions about license change or purchase.

3.4.2. Confirmations before the installation

Please confirm the following 2 points about a PC to install DT10LicenseManager.

- 2 ports from 27000 to 27009 can be opened.
2 ports are used the ports from 27000 to 27009 for the license server.
- PC can restart.
PC restart is required after completing the installation.

3.4.3. Installation flow

1. Extract "DT10LM_For_XX_x86_64.tar.gz" in arbitrary folder.
2. Copy "License data file for the server" to the folder created 1. (DT10ServerFiles).
3. Move to (cd) the above folder by command line.
cd DT10ServerFiles
4. Enter the administrator mode
su
Password : (Enter the administrator password)
5. Specify the license data file name for the server in the argument, and execute shell script for server setup.
./DT10LM_Install.sh the license data file name for the server
6. Setup completed correctly and License manager is started if displayed like the following.

Copying files...

Setting a license file.

Regist a service.

Start a service.

Starting lmgrd -c /usr/local/DT10LM/lic -l /usr/local/DT10LM/logs/dt10_lic_sv.log: [OK]

DT10 license manager setup is completed.

Installation is completed.



Caution

DT10 License Manager is setup by attached shell script.

Necessary files are copied in the following. (DT10LM folder is created by the script)

/usr/local/DT10LM

If it is required to change the save place to different from the above, execute after rewriting the statement about the folder of the following each shell script to arbitrary path.

Second line of DT10LM_Install.sh

DT10_LM_EXTRACT=/usr/local

6th line of DT10lmsvr

DT10_LM_HOME=/usr/local/DT10LM

3.4.4. Setup of a client PC

This chapter explains the way to setup the client PC executes the application.

First, install the application in the client PC.

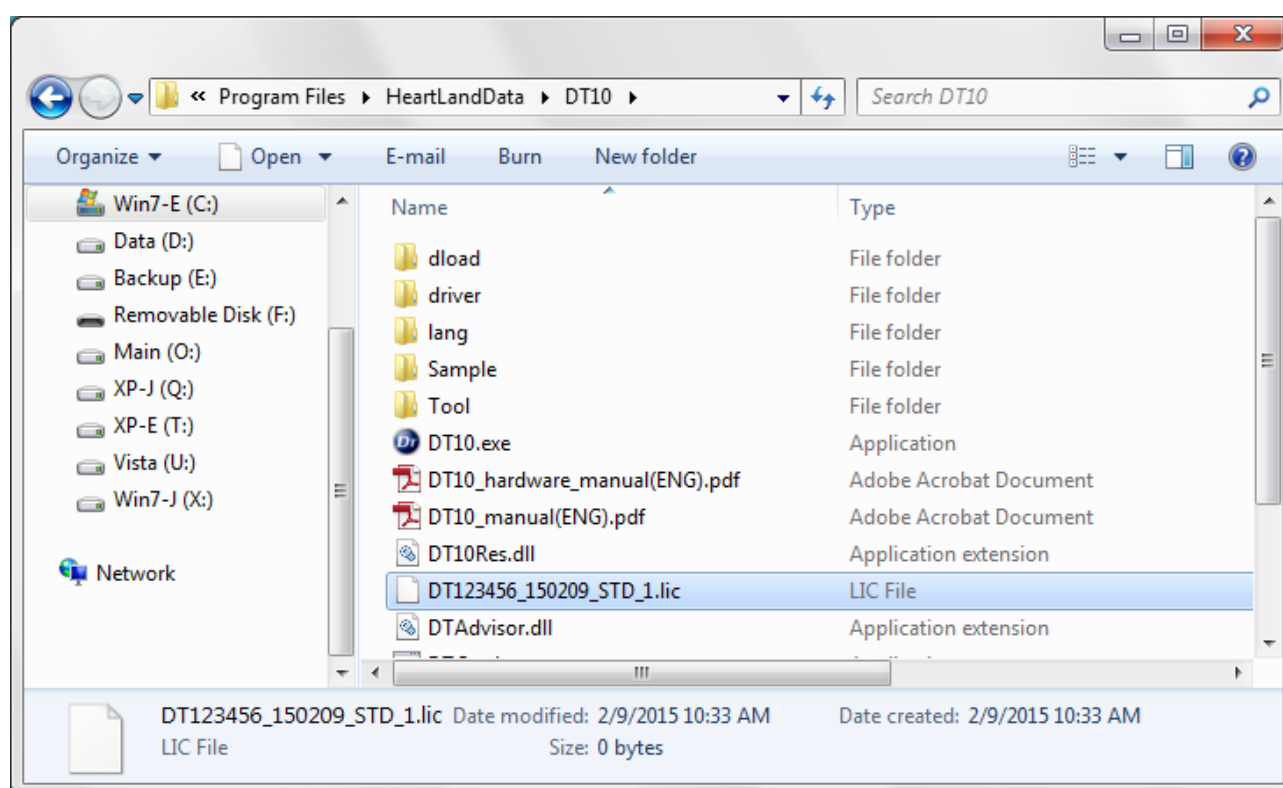
Please refer to [1. Installation of DT10] for more details of the installation.

Copy the "License data file for the client" to the installation folder after the installation of the application.

The default setting of the installation place is the followings.

*[Program Files Path] depends on the machine (Drive name of boot OS and so on)

DT10 : [Program Files Path]HeartLandData\DT10



3.4.5. Licensing confirmation

Start the DT10 application on the client PC.

"Standard Edition" is shown on the upper-right of starting display if the license works correctly.

In case the license is invalid or works incorrectly, "Free Edition" is shown.



Moreover, it is possible to confirm from a log file output by daemon "lmgrd".

Open the following log file "dt10_lic_sv.log" by a text editor.

```
/usr/local/DT10LMlogs/dt10_lic_sv.log
```

The log file content becomes like [Fig.3.4.5 Confirmation of the log file] if Check-out or Check-in is done correctly from the client machine.

Please refer to [3.6 Troubleshooting for the floating license] if the application can not start as "Standard Edition".

Fig.3.4.5 Confirmation of the log file

```

15:52:02 (lmgrd) -----
15:52:02 (lmgrd) Please Note:
:
:
15:52:02 (lmgrd) -----
15:52:02 (lmgrd)
15:52:02 (lmgrd)
15:52:02 (lmgrd) pid 1924
15:52:02 (lmgrd) Done rereading
15:52:02 (lmgrd) FLEXnet Licensing (v11.10.0.0 build 95001 i86_n3) started on FTPSRV(IBM PC) (11/8/2013)
15:52:02 (lmgrd) Copyright (c) 1988-2011 Flexera Software, Inc. All Rights Reserved.
15:52:02 (lmgrd) US Patents 5,390,297 and 5,671,412.
15:52:02 (lmgrd) World Wide Web: http://www.flexerasoftware.com
15:52:02 (lmgrd) License file(s): C:\Program Files\Common Files\HeartLandData\lic\DT123456_20131130 STD_1.lic
15:52:02 (lmgrd) lmgrd tcp-port 27000
15:52:02 (lmgrd) Starting vendor daemons ...
15:52:02 (lmgrd) Started hldcd (pid 1960)
15:52:02 (hldcd) FLEXnet Licensing version v11.10.0.0 build 95001 i86_n3
15:52:02 (hldcd) Using options file: "C:\Program Files\Common Files\HeartLandData\lic\hldcd.opt"
15:52:02 (hldcd) Server started on hldc-PC for:
15:52:02 (hldcd) DT10CSTD (consisting of:      DT10STD
15:52:02 (hldcd) DT10CVT)
15:52:02 (hldcd) EXTERNAL FILTERS are OFF
15:52:02 (hldcd) ALL FEATURES: INACTIVITY TIMEOUT set to 900 seconds
15:52:02 (lmgrd) hldcd using TCP-port 49155
15:53:38 (hldcd) TCP_NODELAY NOT enabled
15:53:38 (hldcd) OUT: "DT10CSTD" hldc@hldc-pc
15:53:38 (hldcd) OUT: "DT10STD" hldc@hldc-pc
15:53:57 (hldcd) IN: "DT10STD" hldc@hldc-pc
15:53:57 (hldcd) IN: "DT10CSTD" hldc@hldc-pc

```

サーバーホスト

ライセンスファイル

クライアント PCからのチェックアウト



クライアント PCからのチェックイン

3.4.6. Uninstall DT10LicenseManager

The way to uninstall DT10LicenseManager is explained in this chapter.

Execute the following shell script as an administrator mode if DT10 License Manager is desired to uninstall.

```
./DT10LM_Uninstall.sh
```

 Caution	<p>Please contact us if the machine used as DT10LicenseManager is desired to change.</p>
 Caution	<p>Similar to the script for the installation, please change the statement of 2nd line of the above script if the save folder of the files are changed.</p> <p>However an error displayed at some of the command execution in case the license manager is stopped by some reason or the installation failed, the script is executed by the end.(Deletion of related files)</p>

3.5. License update for linux server

3.5.1. Update at the license server machine

- Delete the old license file (.lic) in the following folder.

/usr/local/DT10LM/lic

- Copy the new one (.lic) in the folder.
- Restart the server machine.

3.5.2. Update at the client machine

- Delete the old license file (.lic) in the installation folder.

DT10 : [Program Files Path]HeartLandData\DT10

* [Program Files Path] depends on the machine (Drive name of boot OS or so on)

- Copy the new one (.lic) in the folder.

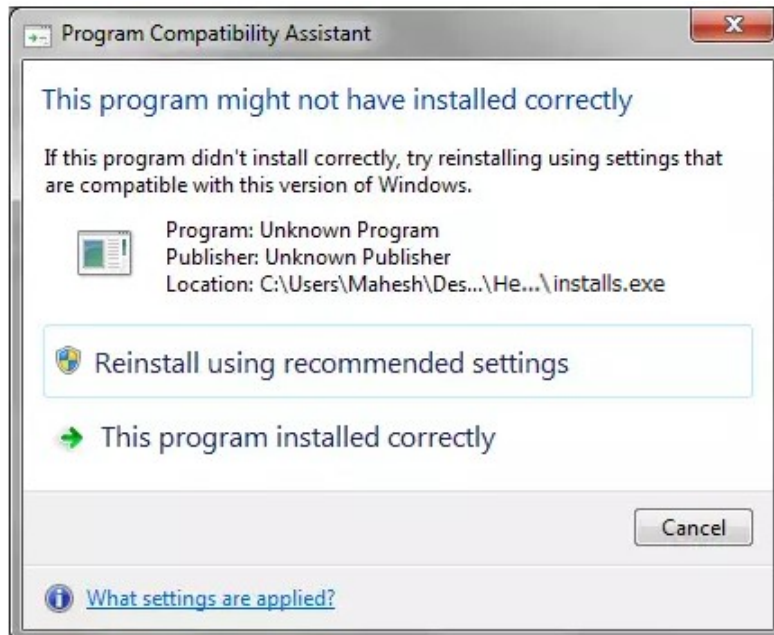
3.5.3. Licensing confirmation

Please refer to [3.4.5 Licensing confirmation].

Troubleshooting for the floating license

<< "Program Compatibility Assistant" is displayed during the installation of DT10LicenseManager >>

"Program Compatibility Assistant" might be displayed in case of Windows Vista or the later.



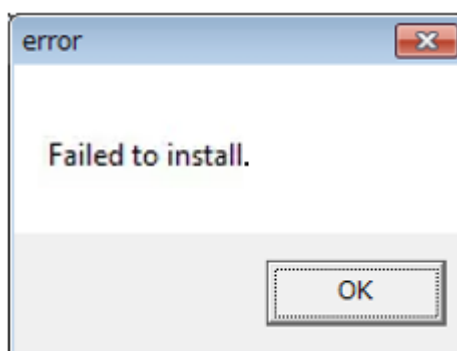
This is displayed because of "installs.exe (The one of the files that extracted in the installation folder)" which starts during the setup.

The confirmation message is displayed because "installs.exe" is not added in "Add or Remove Programs".

It works correctly at the situation, therefore, please select "This program installed correctly" and close the window when it is displayed.

<< Failed to install DT10LicenseManager >>

The following message might be displayed after clicking "Execute" button after selecting the license file during the installation of DT10LicenseManager.



The reason might be the followings:

- The same-name service has already registered (Please ensure from "Computer Management").
- "installs.exe" is not extracted correctly in the installation folder (Please ensure that there is "installs.exe" in the installation folder).
- Setup by not an administrator.

<< The confirmation way of the log file of the license server >>

This chapter explains the log file in the following situations

1. The registration of the license data is NOT correct (Incorrect flow of the server installation).
2. The specified information (IP address) can NOT identify the server host.
3. The communication of the license check is blocked by firewall.
4. The license is expired.

1. The registration of the license data is NOT correct (Incorrect flow of the server installation)

```

17:40:33 (lmgrd) -----
17:40:33 (lmgrd) Please Note:
      :
      :
17:40:33 (lmgrd) -----
17:40:33 (lmgrd)
17:40:33 (lmgrd)
17:40:33 (lmgrd) pid 1988
17:40:33 (lmgrd) license manager: can't initialize:Cannot find license file.
17:40:33 (lmgrd) The license files (or license server system network addresses) attempted are
17:40:33 (lmgrd) listed below. Use LM_LICENSE_FILE to use a different license file,
17:40:33 (lmgrd) or contact your software provider for a license file.
17:40:33 (lmgrd) Filename: "C:\flex\lm\license.dat"
17:40:33 (lmgrd) License Path: "C:\flex\lm\license.dat"
17:40:33 (lmgrd) FLEXnet Licensing error:-1,359
17:40:33 (lmgrd) System Error:2 No such file or directory
17:40:33 (lmgrd) For further information, refer to the FLEXnet Licensing documentation,available at
"www.flexerasoftware.com".
17:40:33 (lmgrd) Using license file "C:\flex\lm\license.dat"

```

The message "can't initialize:Cannot find license file." or "No such file or directory" is displayed if the registration of the license data is NOT correct.

In this case, please confirm the path of the license data and ensure that there is the license data file in the folder.

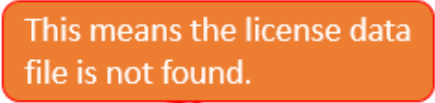
Please change the path using "lmtools.exe" in the installation folder of the license manager if registration of the license data is incorrect.

The following flow is to change the path.

- 1) Start "lmtools.exe" in the installation folder of the license manager.
(In default setting, "%Program Files%Common Files%HeartLandData%" of the boot disk.)
- 2) Click the tab "Config Services" of LMTOOLS window.
- 3) Select the license data file from the file selection dialog box displayed by clicking "Browse" button of "Path to the license file item."
- 4) Close the LMTOOLS window.
- 5) Please select "Yes" in the message "Would you like to save the settings for the service?"
- 6) Restart the server machine.

2. The specified information (IP address) can NOT identify the server host.

```
17:10:06 (lmgrd) -----
17:10:06 (lmgrd) Please Note:
                :
                :
17:10:06 (lmgrd) -----
17:10:06 (lmgrd)
17:10:06 (lmgrd)
17:10:06 (lmgrd) pid 500
17:10:07 (lmgrd) "FTPSRV": Not a valid server hostname, exiting.
17:10:07 (lmgrd) Valid license server system hosts are: "192.168.2.100"
17:10:07 (lmgrd) Using license file "C:\DT10\DT123456_STD_20140228_002.lic"
```



The message ""FTPSRV": Not a valid server hostname, exiting." or "Valid license server system hosts are: "XXX.XXX.XXX.XXX"" is displayed if the specified information(IP address) can not identify the server host.

In this case, please confirm the IP address of the server. Our support staff publish the license again if the IP address is incorrect.

In the environment that can not fix the IP address, please contact us because the license can be published by the host name instead of the IP address.

3. The communication of the license check is blocked by firewall

```
17:22:42 (lmgrd) -----
17:22:42 (lmgrd) Please Note:
                :
                :
17:22:42 (lmgrd) -----
17:22:42 (lmgrd)
17:22:42 (lmgrd)
17:22:42 (lmgrd) pid 2000
17:22:42 (lmgrd) Done rereading
17:22:42 (lmgrd) FLEXnet Licensing (v11.10.0.0 build 95001 i86_n3) started on FTPSRV (IBM PC) (5/2/2013)
17:22:42 (lmgrd) Copyright (c) 1988-2011 Flexera Software, Inc. All Rights Reserved.
17:22:42 (lmgrd) US Patents 5,390,297 and 5,671,412.
17:22:42 (lmgrd) World Wide Web: http://www.flexerasoftware.com
17:22:42 (lmgrd) License file(s): C:\DT_Lic\DT123456_STD_20130701_002.lic
17:22:42 (lmgrd) lmgrd tcp-port 27000
17:22:42 (lmgrd) Starting vendor daemons ...
17:22:42 (lmgrd) Started hldcd (pid 328)
17:22:43 (hldcd) FLEXnet Licensing version v11.10.0.0 build 95001 i86_n3
17:22:43 (hldcd) Server started on FTPSRV for: DT10STD
17:22:43 (hldcd) EXTERNAL FILTERS are OFF
17:22:43 (lmgrd) hldcd using TCP-port 49155
```

Normally, the message "OUT: "Edition" Client PC name" is displayed when the license is obtained starting DT10 application.

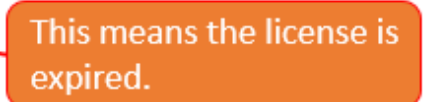
("Check-Out" means that the client PC starts the application and gets the license, and "Check-In" means that the client PC returns the license.)

If the communication is blocked by firewall, the check-out message is NOT displayed like the above example.

In this case, please ensure that the specified port(Normally it's 27000) is opened, or confirm it to the server administrator.

4. The license is expired.

```
17:08:29 (lmgrd) -----
17:08:29 (lmgrd) Please Note:
          :
          :
17:08:29 (lmgrd) -----
17:08:29 (lmgrd)
17:08:29 (lmgrd)
17:08:29 (lmgrd) pid 1984
17:08:29 (lmgrd) Done rereading
17:08:29 (lmgrd) FLEXnet Licensing (v11.10.0.0 build 95001 i86_n3) started on FTPSRV (IBM PC) (7/2/2013)
17:08:29 (lmgrd) Copyright (c) 1988-2011 Flexera Software, Inc. All Rights Reserved.
17:08:29 (lmgrd) US Patents 5,390,297 and 5,671,412.
17:08:29 (lmgrd) World Wide Web: http://www.flexerasoftware.com
17:08:29 (lmgrd) License file(s): C:\DT_Lic\DT123456_STD_20130701_002.lic
17:08:29 (lmgrd) lmgrd tcp-port 27000
17:08:29 (lmgrd) Starting vendor daemons ...
17:08:29 (lmgrd) Started hldcd (pid 2012)
17:08:30 (hldcd) FLEXnet Licensing version v11.10.0.0 build 95001 i86_n3
17:08:30 (hldcd) EXPIRED: DT10STD
17:08:30 (hldcd) License server system started on FTPSRV
17:08:30 (hldcd) No features to serve, exiting
17:08:30 (hldcd) EXITING DUE TO SIGNAL 27 Exit reason 4
17:08:34 (lmgrd) hldcd exited with status 27 (No features to serve)
17:08:34 (lmgrd) hldcd daemon found no features. Please correct
17:08:34 (lmgrd) license file and re-start daemons.
17:08:34 (lmgrd)
17:08:34 (lmgrd) This may be due to the fact that you are using
17:08:34 (lmgrd) a different license file from the one you expect.
17:08:34 (lmgrd) Check to make sure that:
17:08:34 (lmgrd) C:\DT_Lic\DT123456_STD_20130701_002.lic
17:08:34 (lmgrd) is the license file you want to use.
17:08:34 (lmgrd)
```



This means the license is expired.

The message "EXPIRED: DT10STD" is displayed if the license is expired.


Please contact us.

Email : user@hldc.co.jp

4. Setup of The USB Dongle License

4.1. Setup of the USB dongle license

It is necessary to make the machine activated the USB dongle when using the USB dongle.

 Caution	<p>To use it via Terminal Services connection such as Windows Remote Desktop Connection, you need a license for Remote Desktop.</p> <p>Please contact your sales representative if you have any questions about license change or purchase.</p>
---	---

4.1.1. Installation of runtime

The license expiry date of the USB dongle and the other information can be checked in the web application by the installation of the latest RTE (runtime).

1. Please disconnect the USB dongle from the machine using DT10.
2. Download the latest RTE from "Download applications" of the support page of our web site.

* User ID and the password are necessary to see the support site.

<URL>

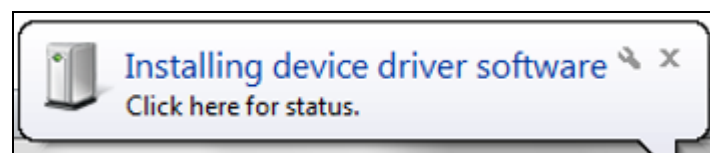
<http://hldc.co.jp/support/dt10-support/dt10-download/dt10-app-download/>

3. Install the RTE in the machine using DT10.
Please extract the downloaded file and execute "HASPUUserSetup.exe"
4. Please restart the machine after the installation.

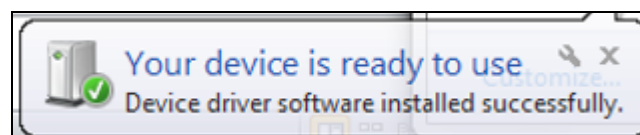
4.1.2. Connect the USB dongle to the machine

Connect the USB dongle to the machine installed DT10 application.

After the connection, plug and play is executed automatically.



Please wait a moment until the message is displayed.



LED light of the USB dongle turns on after this condition.

The USB dongle activated once does not execute the above process after connecting again.

However, the above process will be executed when the USB dongle is connected in the different port.

4.1.3. Licensing confirmation

Please start DT10 application by the machine connected the USB dongle.

"Standard Edition" is shown on the upper-right of starting display if the license works correctly.

In case the license is invalid or works incorrectly, "Free Edition" is shown.



Please refer to [4.3 Troubleshooting for the floating license] if the application can not start as "Standard Edition".

4.2. Update the USB dongle license

4.2.1. Update the V2C file

Please get the V2C file (License update data file) from our support staff if update the USB dongle license.

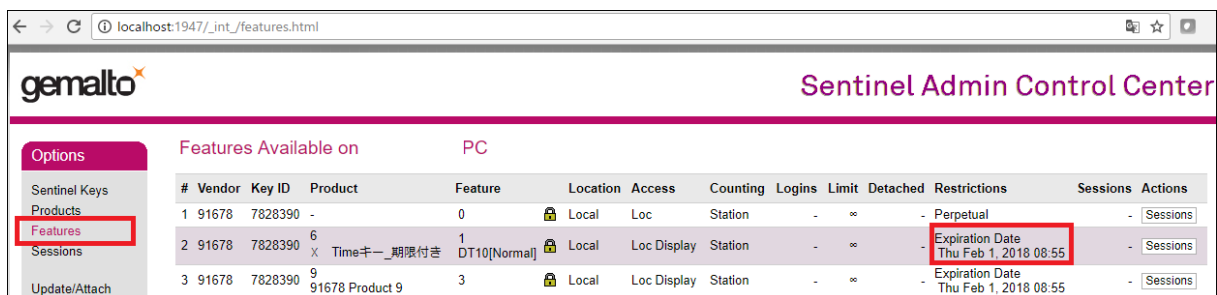
Update from the dedicated web application "Sentinel Admin Control Center (ACC)".

1. Connect the USB dongle to the machine.
2. Access the following URL.

<URL>

<http://localhost:1947/>

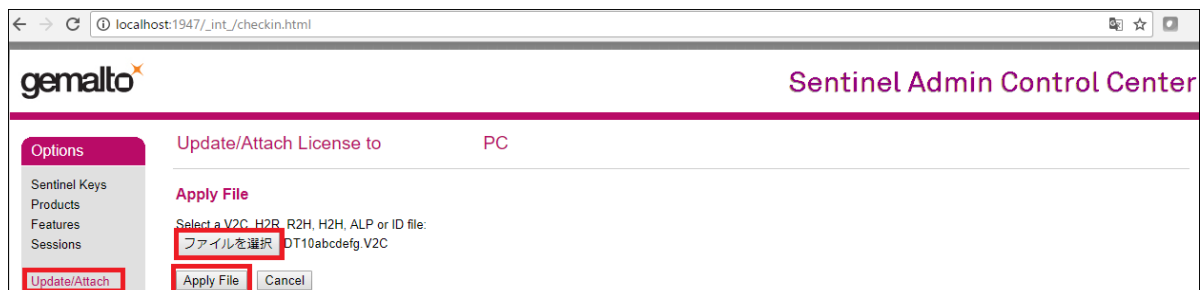
3. Please select "Features" of "Options" in the left side of the display after opening ACC Control Center (ACC) application.



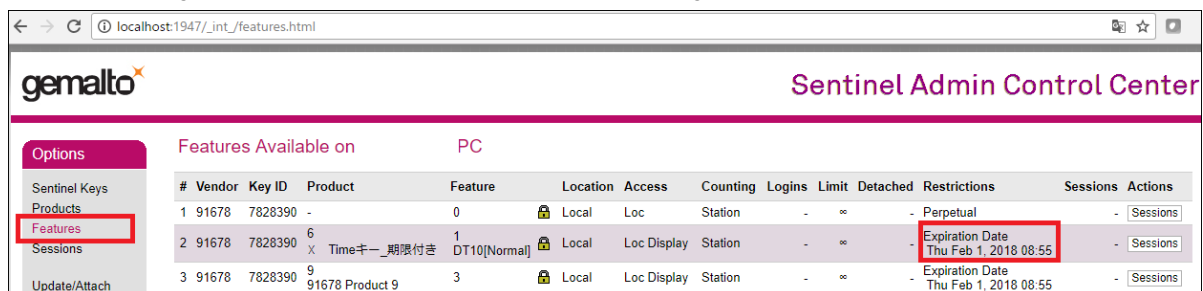
#	Vendor	Key ID	Product	Feature	Location	Access	Counting	Logins	Limit	Detached	Restrictions	Sessions	Actions
1	91678	7828390	-	0	Local	Loc	Station	-	∞	-	Perpetual	-	Sessions
2	91678	7828390	6 Timeキー_期限付き	1 DT10[Normal]	Local	Loc Display	Station	-	∞	-	Expiration Date Thu Feb 1, 2018 08:55	-	Sessions
3	91678	7828390	9 91678 Product 9	3	Local	Loc Display	Station	-	∞	-	Expiration Date Thu Feb 1, 2018 08:55	-	Sessions

In the "Restrictions" items, the expire date can be checked. ("Expired" is displayed if it is expired.)

4. Select the V2C file (*.V2C) from "Select file" after selecting "Update/Attach".
5. Click the "Apply File" button and the message "Your update was applied successfully." is displayed after the complete of update.



6. Select "Features" again and ensure that expire date of the USB dongle is updated.



#	Vendor	Key ID	Product	Feature	Location	Access	Counting	Logins	Limit	Detached	Restrictions	Sessions	Actions
1	91678	7828390	-	0	Local	Loc	Station	-	∞	-	Perpetual	-	Sessions
2	91678	7828390	6 Timeキー_期限付き	1 DT10[Normal]	Local	Loc Display	Station	-	∞	-	Expiration Date Thu Feb 1, 2018 08:55	-	Sessions
3	91678	7828390	9 91678 Product 9	3	Local	Loc Display	Station	-	∞	-	Expiration Date Thu Feb 1, 2018 08:55	-	Sessions

4.2.2. Licensing confirmation

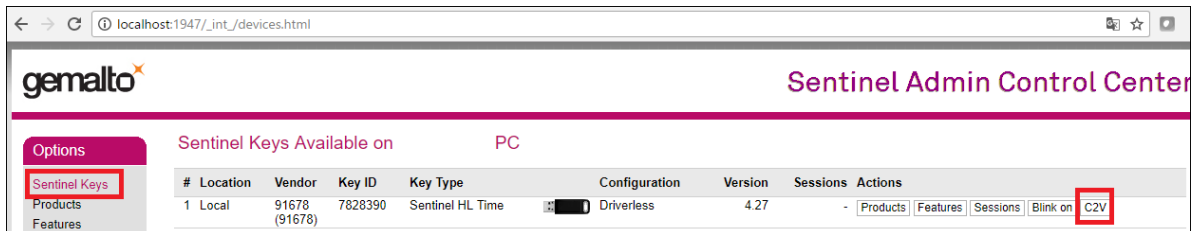
Please see that the license is activated after the update. Please refer [4.1.3 Licensing Confirmation].

4.2.3. Generate C2V file

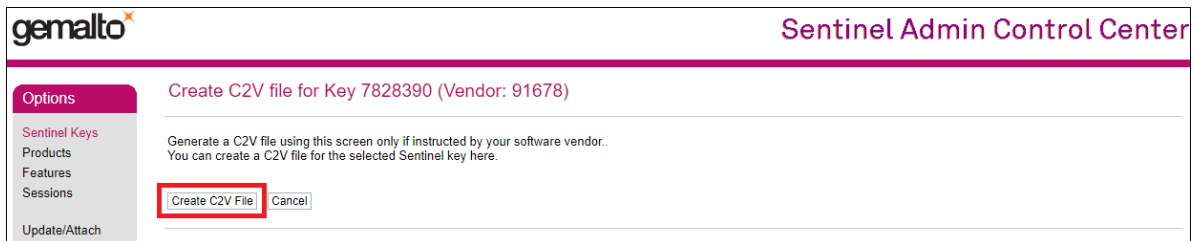
C2V file is the update completion information file and it is needed in the timing of the next license update.

After the update, please generate C2V file and send to us.

1. Click "C2V" of "Action" after switch to "Sentinel Keys" of "Option" in the left side of the ACC display.



2. Generate C2V file by selecting "Download C2V file"



3. Please send the email attaching the generated C2V file.

Email : license@hldc.co.jp

4.3. Troubleshooting of the USB dongle license

<< ACC is not displayed, or USB dongle is not activated >>

Please try the followings:

- Download and install the latest RTE from our web site

Please access ACC again or confirm the license is valid starting DT10 after the installation.

<URL>

<http://hldc.co.jp/support/dt10-support/dt10-download/dt10-app-download/>

- In case there is the older license file (.lic file) used when the free trial in the installation folder, please delete it.
- Please ensure to happen the trouble when connecting the USB dongle in other different USB port.
- Please ensure to happen the trouble if the security software like firewall or antivirus is set to off.
- Please contact us if the trouble still happens.

If possible, please attach the diagnostics file (diagnostics.html) output by ACC when send a mail.

< Creation flow of the diagnostics file >

- Connect the USB dongle to PC.
- Access this URL: <http://localhost:1947>
- Select the [Diagnostics] in [Opitons] and select [Generate Report] in the lower side.
- Save the page after [Admin Cotrol Center Diagnostics] is displayed.

5. Change History

Date	Version	Changed Summary (The values in [] refer to the item number and section)
April 27, 2018	Ver.1.0.0	Renewal of the Install manual.
June 24 2019	Ver.1.0.1	Updated the installation procedure. The support platform has been updated.



361 Fukui-cho, Ashikaga city, Tochigi prefecture 326-0338 Japan

Tel:+81-284-22-8791 / Fax:+81-284-22-8792

URL: heartlanddata.com